



Baker Atlas

FILE NO:	COMPANY	VULCAN MINERALS INC.
API NO:	WELL	VULCAN INVESTCAN RED BROOK #2
	FIELD	BAY ST.GEORGE BASIN
	PROVINCE	NEWFOUNDLAND AND LABRADOR
Ver. 3.87	LOCATION:	
UID:	BH LOC. LSD:	OTHER SERVICES
N/A	LAT 48.2679591667	XMAG-GR-CAL, CYL
LICENSE:	LONG -58.7501141667	DLL-GR, DSL
ADW 2009-116-03-		
PERMANENT DATUM	G.L.	ELEVATION
LOG MEASURED FROM	K.B.	6.3 M
DRILL MEAS. FROM	KELLY BUSHING	ABOVE P.D.
		ELEVATIONS:
		KB 61.8 M
		DF
		GL 55.5 M

DATE		09-NOV-2009		
RUN	TRIP	1	2	
SERVICE ORDER		CA206497		
DEPTH DRILLER		889.0 M		
DEPTH LOGGER		888.2 M		
BOTTOM LOGGED INTERVAL		887.7 M		
TOP LOGGED INTERVAL		20.0 M		
CASING DRILLER		339.7 MM		220.2 M
CASING LOGGER		220.2 M		
BIT SIZE		311.0 MM		
TYPE OF FLUID IN HOLE		BRINE		
DENSITY	VISCOSITY	1240.0 G/L	69.0 S	
PH	FLUID LOSS	10.8	18.4 ML	
SOURCE OF SAMPLE		TOOL MEASURED		
RM AT MEAS. TEMP.		0.07 OHMM	21.0 DEGC	2
RMF AT MEAS. TEMP.		0.06 OHMM	21.0 DEGC	2
RMC AT MEAS. TEMP.		0.08 OHMM	21.0 DEGC	2
SOURCE OF RMF	RMC	CALCULATED	CALCULATED	
RM AT BHT		0.07 OHMM	19.9 DEGC	2
TIME SINCE CIRCULATION		10.8 HOURS		
MAX. RECORDED TEMP.		20.1 DEGC		
EQUIP. NO.	LOCATION	4126	OH SARNIA	
RECORDED BY		D.SHKOLNIKOV		
WITNESSED BY		M.SMITH		

IN MAKING INTERPRETATIONS OF LOGS OUR EMPLOYEES WILL GIVE CUSTOMER THE BENEFIT OF THEIR BEST JUDGEMENT. BUT SINCE ALL INTERPRETATIONS ARE OPINIONS BASED ON INFERENCES FROM ELECTRICAL OR OTHER MEASUREMENTS, WE CANNOT, AND WE DO NOT GUARANTEE THE ACCURACY OR CORRECTNESS OF ANY INTERPRETATION. WE SHALL NOT BE LIABLE OR RESPONSIBLE FOR ANY LOSS, COST, DAMAGES, OR EXPENSES WHATSOEVER INCURRED OR SUSTAINED BY THE CUSTOMER RESULTING FROM ANY INTERPRETATION MADE BY ANY OF OUR EMPLOYEES.

BOREHOLE RECORD		
BIT SIZE	FROM	TO
444.5 MM	0.0 M	220.2 M
311.0 MM	220.2 M	889.0 M

CASING RECORD				
SIZE	WEIGHT	GRADE	FROM	TO
339.7 MM	71.4 KG/M	J-55	0.0 M	220.2 M

REMARKS

RUN 1 TRIP 2 : TIME STOPPED CIRCULATION: 09-NOV-2009 08:10 PM

CNC IS ZDL CALIPER CORRECTED.  
CNC AND PORZ RECORDED AND PRESENTED IN SANDSTONE MATRIX 2.65G/CM3.  
CNC IS CORRECTED FOR 444.5 MM BIT SIZE BEHIND CASING FROM 220.2 M TO SURFACE  
AND PRESENTED BELOW REPEAT PASS

RIG: STONEHAM #11

CREW: D.SHKOLNIKOV, D.KIRWAN, S.ZEMAN

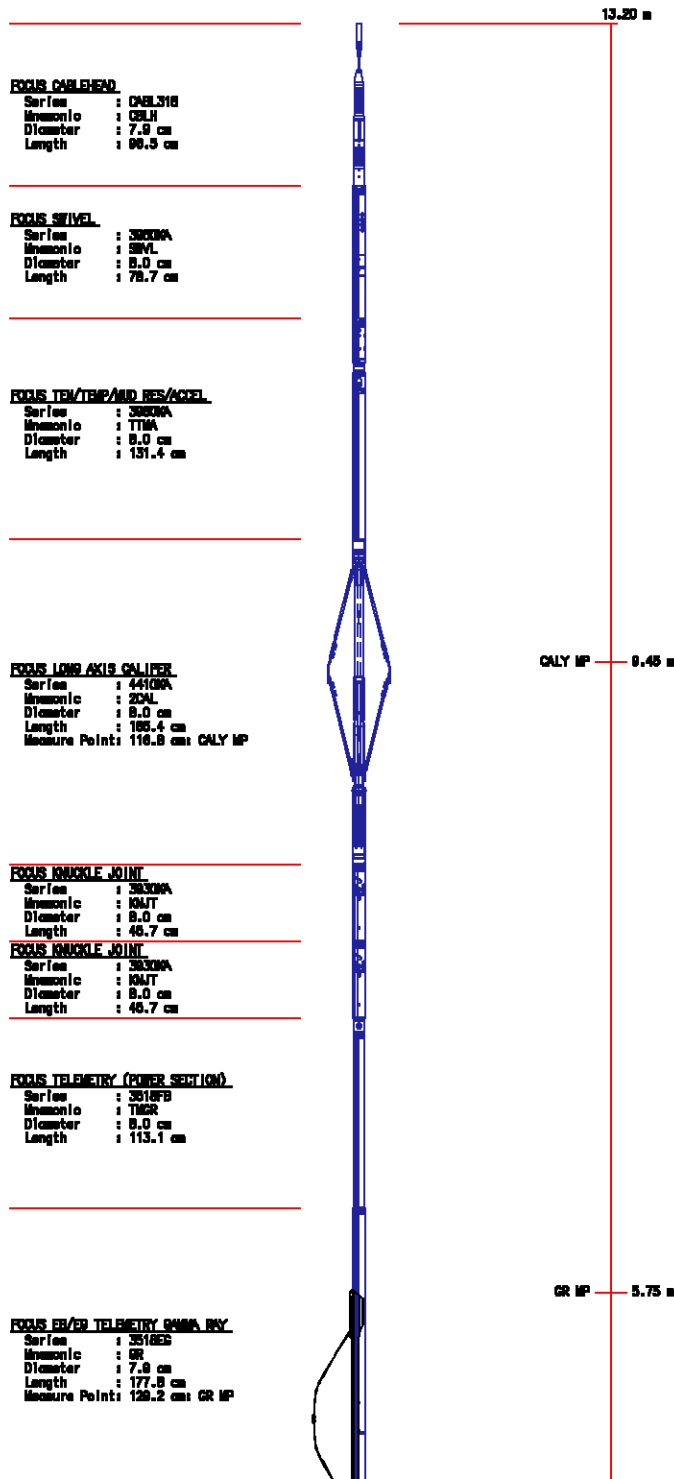
EQUIPMENT DATA

RUN	TRIP	TOOL	SERIES NO	SERIAL NO	POSITION
-----	------	------	-----------	-----------	----------

ROW	TRM	TOOL	SERIES NO.	SERIAL NO.	POSITION
1	2	FOCUS SWIVE	3950XA	10128472	FREE
1	2	TTMA SUB	3980XA	402454	FREE
1	2	2-ARM CAL	4410XA	10171015	FREE
1	2	DBL KNJT	3931XA	10216109	FREE
1	2	COMM/POWER	3518FB	10395839	DECENTRALIZED
1	2	COMM/GR	3518EB	10386766	DECENTRALIZED
1	2	FOCUS CN	2436XA	402534	DECENTRALIZED
1	2	FOCUS ZDEN	2223XA	10130454	PAD DEVICE

## INSTRUMENT CONFIGURATION

Source File: /dat1a/pass/vul\_rb2/k970a"-tdg



**FOCUS COMPENSATED NEUTRON**

Series : 24380A  
Memorio : CN  
Diameter : 8.0 cm  
Length : 148.7 cm  
Measure Point: 35.4 cm: LSN MP  
Measure Point: 44.5 cm: SSN MP

LSN MP : 3.67 m  
SSN MP : 3.43 m

**FOCUS Z-DENSILOG**

Series : 22230A  
Memorio : ZDL  
Diameter : 9.6 cm  
Length : 232.1 cm  
Measure Point: 122.1 cm: CR1 MP  
Measure Point: 51.4 cm: LSD / CR2 MP  
Measure Point: 39.4 cm: SSD MP

CR1 MP : 1.38 m

LSD / CR2 MP : 0.55 m  
SSD MP : 0.46 m

**REAL PLUS 3 1/8**

TOTAL LENGTH: 15.20 m  
TOTAL WEIGHT: 324.1 kg  
MAX DIAMETER: 8.3 cm

0.00 m

## MAIN LOG - UPPER PRESENTATION SANDSTONE MATRIX

ECLIPS 6.0i Feb 21, 2008  
Updates: 1

Tue Nov 10 08:01:45 2009

Perplt /main/62

Cplot

Pdf\_Cpp /main/16

Fileview 5.42

### PARAMETER AND FILTER SUMMARY REPORT

FILE: /data/pass/vul\_rb2/k740d02.prm  
LOGGING MODE: DEPTH DIRECTION: UP  
TOP DEPTH: 181.889 m BOTTOM DEPTH: 890.827 m

#### SYMMETRIC FILTER

MEASUREMENT TYPE	PARAMETER	VALUE	UNITS	INTERVAL (m)	
TENSION GR	FILTER ( )	medium (1)		TOP	BOTTOM
	FILTER ( )	medium (1)		"	"

#### BOREHOLE & CEMENT

MEASUREMENT TYPE	PARAMETER	VALUE	UNITS	INTERVAL (m)	
BIT SIZE	BIT SIZE	311.000	mm	TOP	BOTTOM

### PARAMETER AND FILTER SUMMARY REPORT

File: /data/pass/vul\_rb2/k970a03.prm  
LOGGING MODE: DEPTH DIRECTION: UP  
TOP DEPTH: 198.044 m BOTTOM DEPTH: 892.059 m

#### SYMMETRIC FILTER

MEASUREMENT TYPE	PARAMETER	VALUE	UNITS	INTERVAL (m)	
CHT	FILTER ( )	medium (1)		TOP	BOTTOM
GR MED RES	FILTER ( )	medium (1)		''	''
CALIPER	FILTER ( )	medium (1)		''	''
TENSION	FILTER ( )	medium (1)		''	''
ZDL MED RES	FILTER (hrd1*)	medium		''	''
	FILTER (hrd1s*)	medium		''	''
	FILTER (hrd2*)	medium		''	''
	FILTER (hrd2s*)	medium		''	''
	FILTER (soft*)	medium		''	''

### BOREHOLE & CEMENT

MEASUREMENT TYPE	PARAMETER	VALUE	UNITS	INTERVAL (m)	
BIT SIZE	BIT SIZE	311.000	mm	TOP	BOTTOM

### ACCELERATION PROCESSING

MEASUREMENT TYPE	PARAMETER	VALUE	UNITS	INTERVAL (m)	
ACCEL CORR SWITCH	ACCEL DEPTH CORR	CORRECTION ON		TOP	BOTTOM

### CURVE DESCRIPTION REPORT

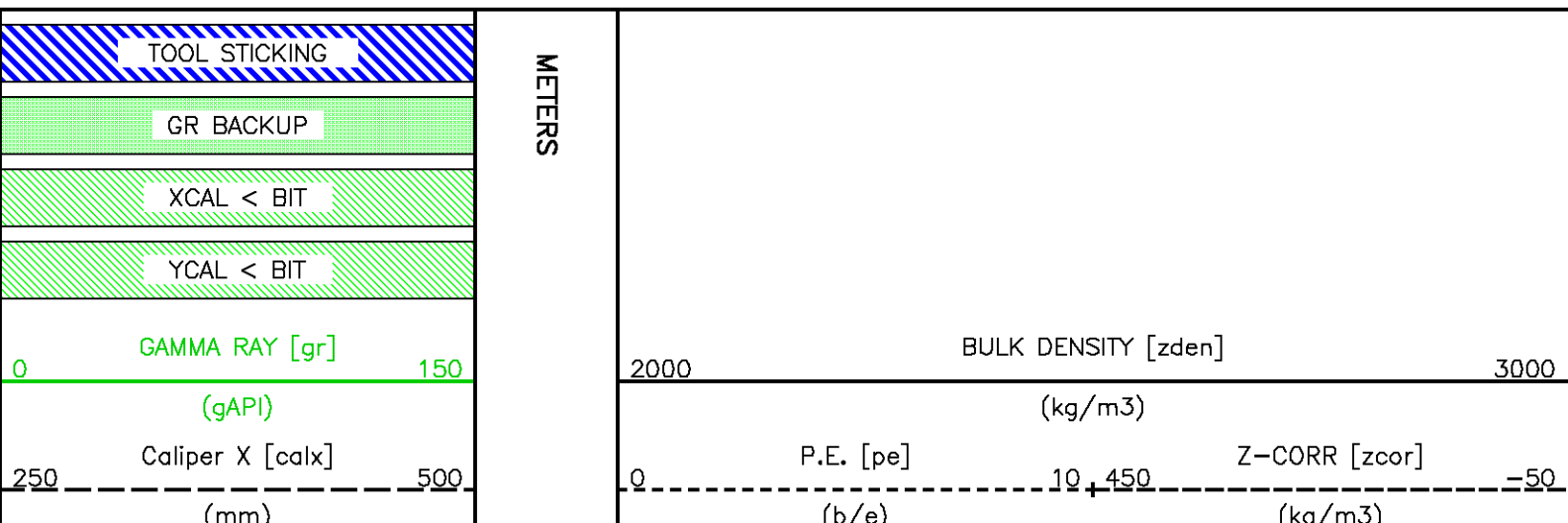
CURVE NAME	CURVE ALIAS	CREATION DATE	CURVE DESCRIPTION
F1:BIT	BIT	Nov 10 03:05:18 2009	BIT SIZE
F1:CALX	CALX	Nov 10 06:58:51 2009	CALIPER FROM X AXIS OF X-Y CALIPER(S)
F1:CALY	CALY	Nov 10 06:58:51 2009	CALIPER FROM Y AXIS OF X-Y CALIPER(S)
F1:CHT	CHT	Nov 10 06:58:51 2009	CABLE HEAD TENSION
F1:GR	GR	Nov 10 03:05:18 2009	GAMMA RAY
F1:MMRK	MMRK	Nov 10 03:05:18 2009	MINUTE MARK
F1:PE	PE	Nov 10 06:58:51 2009	PHOTO ELECTRIC CROSS-SECTION
F1:TEN	TEN	Nov 10 03:05:18 2009	DIFFERENTIAL TENSION
F1:ZCOR	ZCOR	Nov 10 06:58:51 2009	DENSITY CORRECTION
F1:ZDEN	ZDEN	Nov 10 06:58:51 2009	FORMATION BULK DENSITY

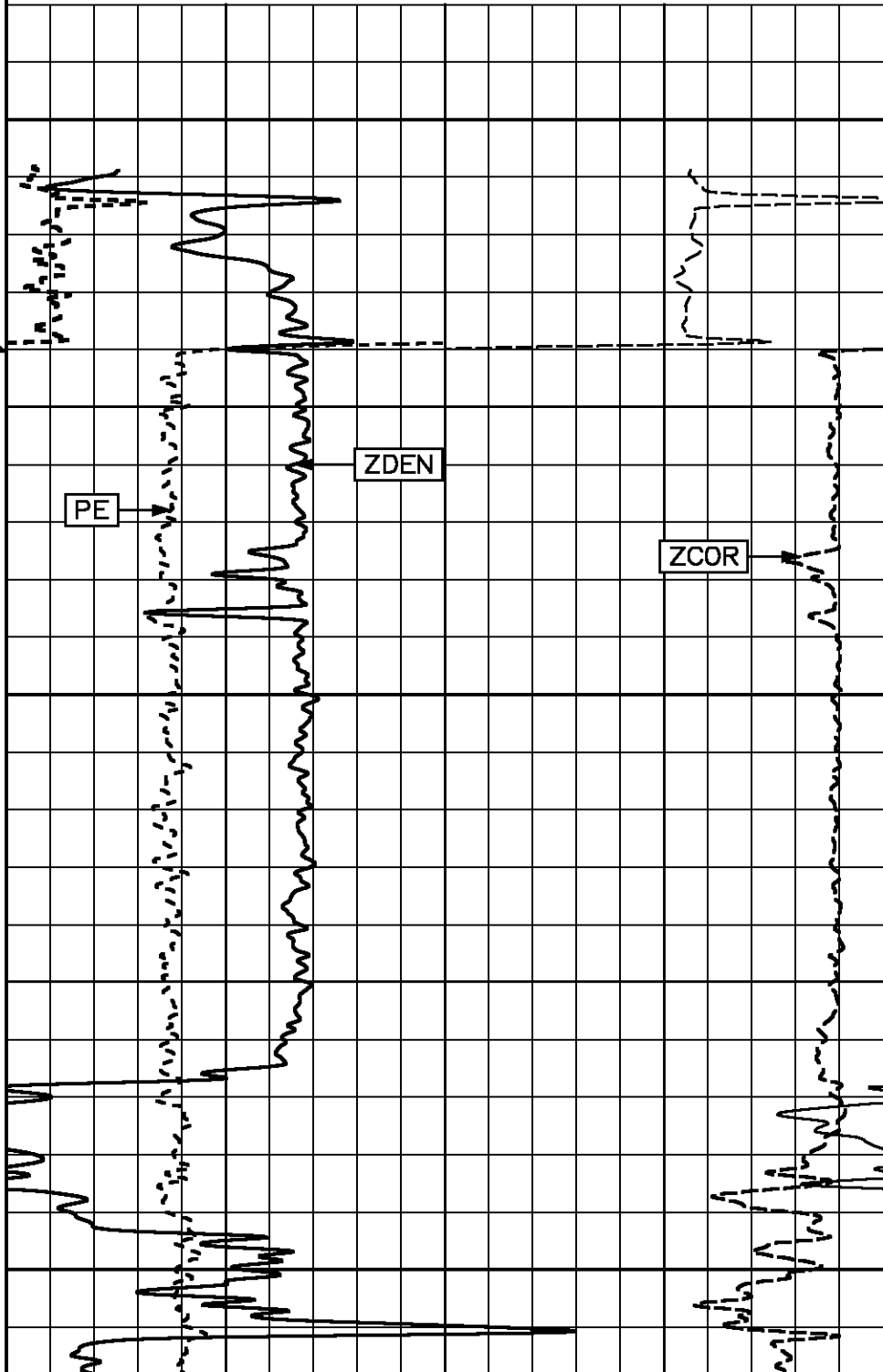
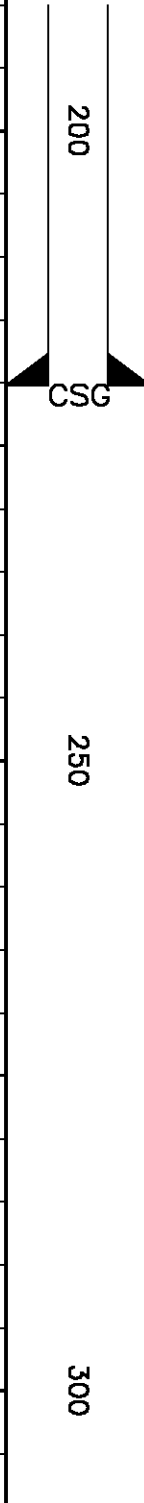
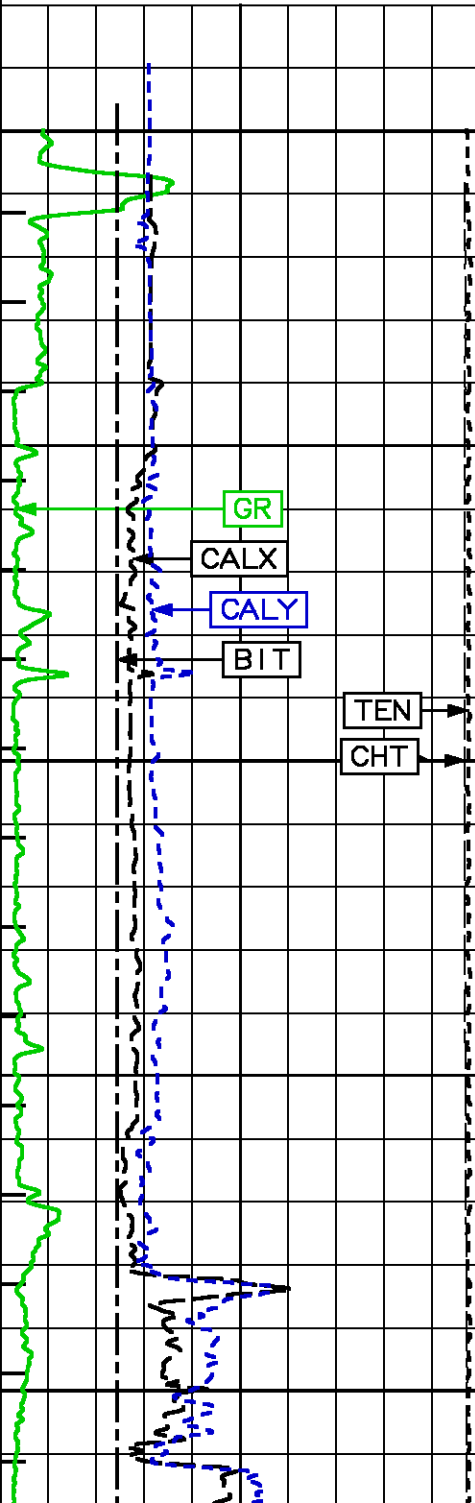
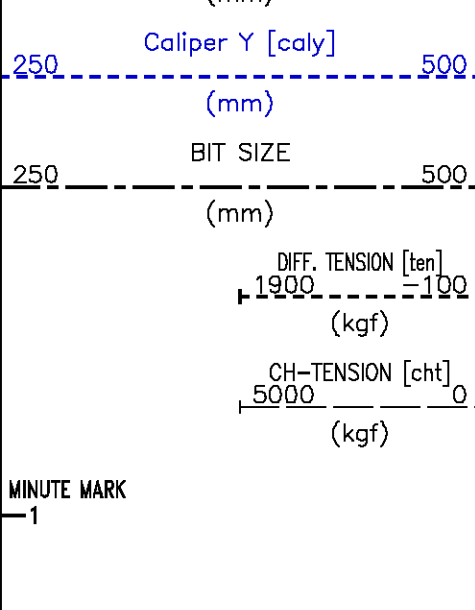
### CURVE MEASURE POINT OFFSET

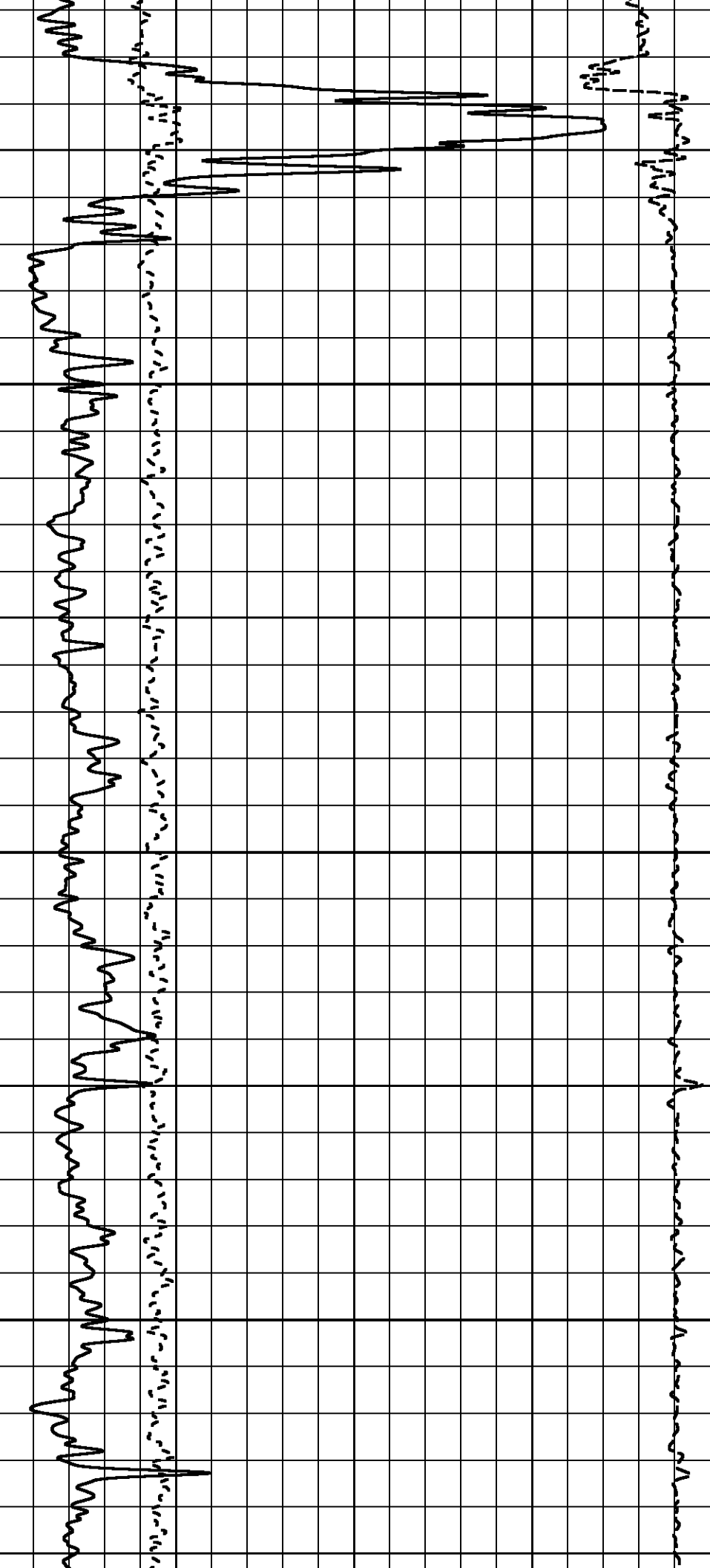
CURVE	OFFSET (m)	CURVE	OFFSET (m)	CURVE	OFFSET (m)	CURVE	OFFSET (m)
BIT	0.00	CHT	0.00	TEN	0.00		
CALX	0.53	GR	13.64	ZCOR	0.53		
CALY	9.37	PE	0.53	ZDEN	0.53		

Presentation : cpu1:/dat1a/pass/vul\_rb2/zdl\_up.pdf [1:600 Scale]  
Plot Interval : 194.767 - 893.293 Meters

Data File 1 : F1 : cpu1:/dat1a/pass/vul\_rb2/311\_mainl.xtf  
Created On : Nov 10 06:58:51 2009  
Company : VULCAN MINERALS  
Well : VULCAN INVESTCAN RED BROOK #2  
Field : BAY ST. GEORGE BASIN  
File Interval : 192.786 - 893.293 Meters  
Oct : k740d



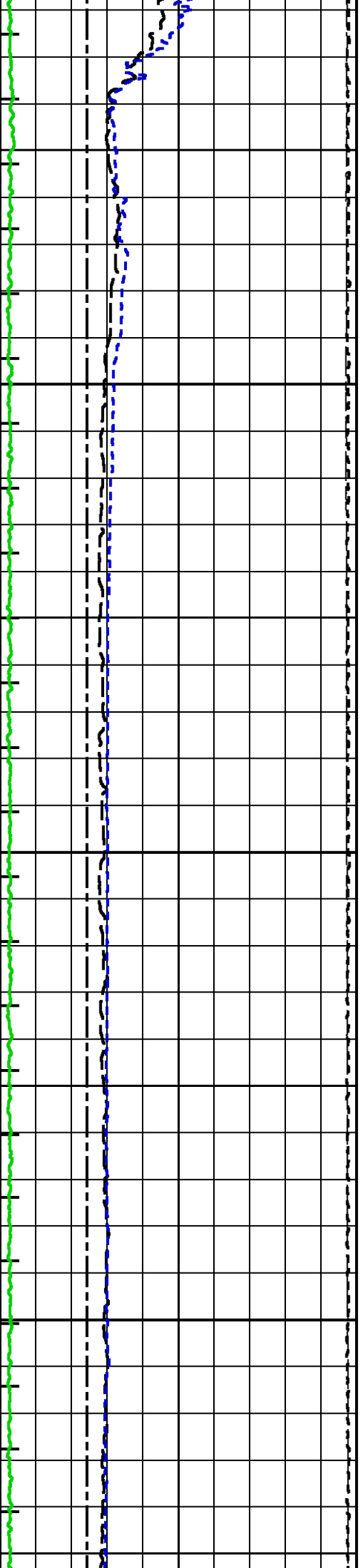


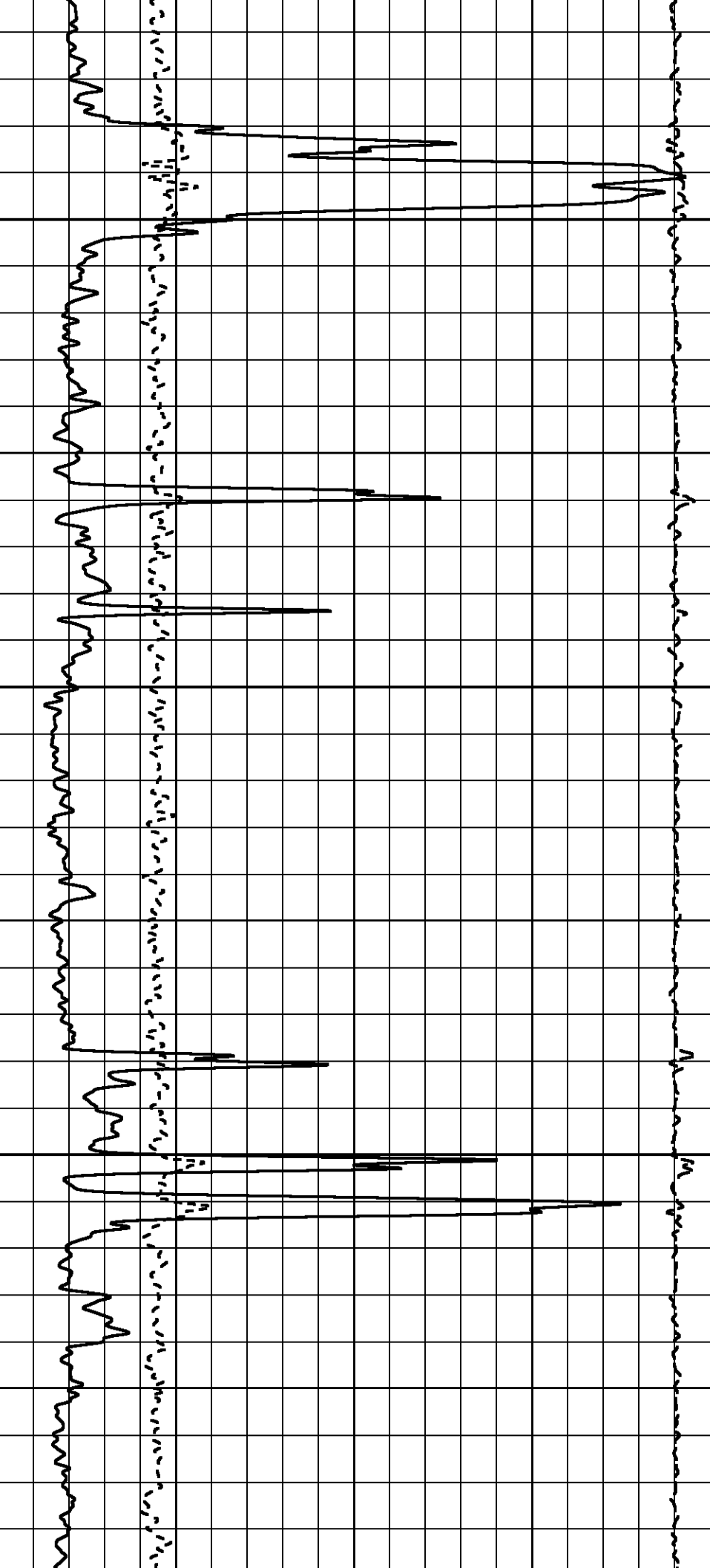


350

400

450

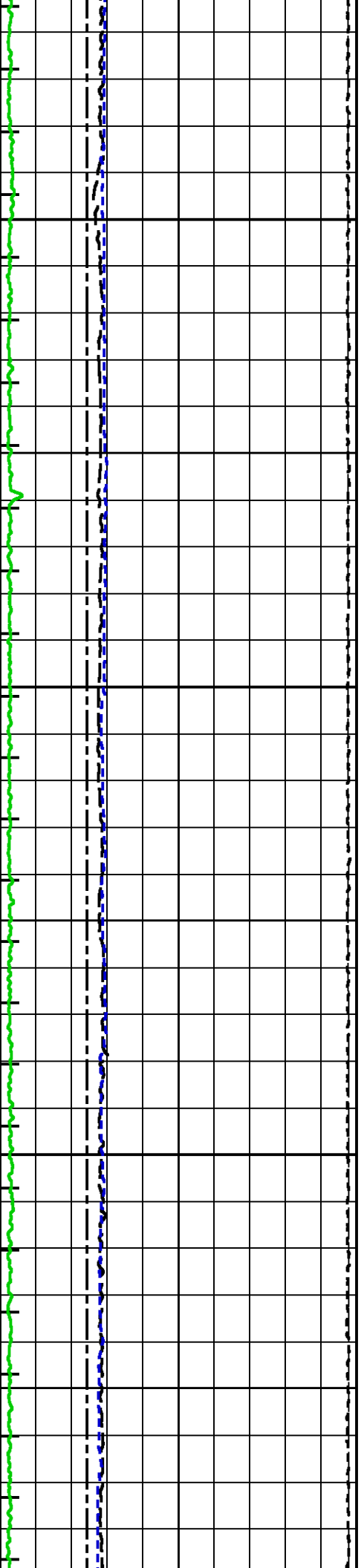


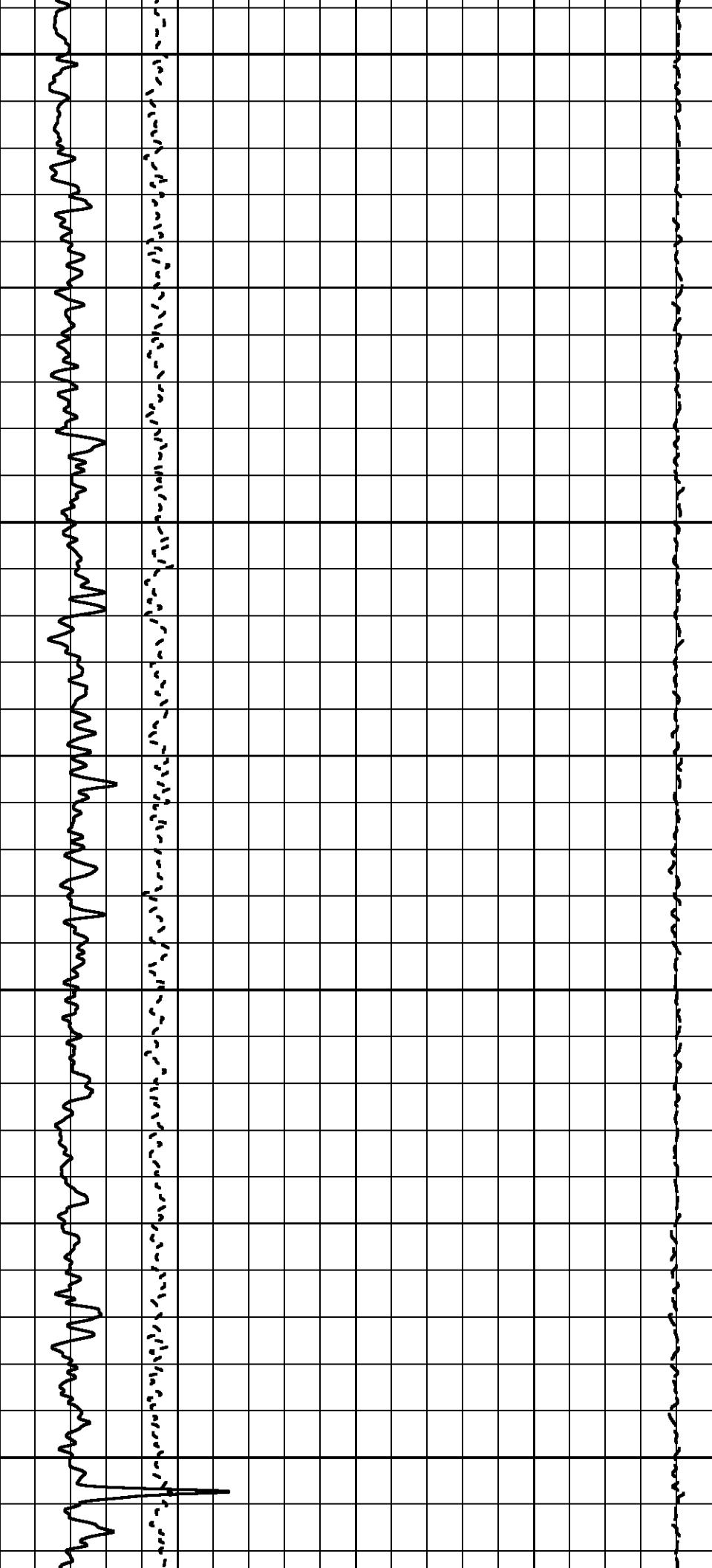


500

550

600



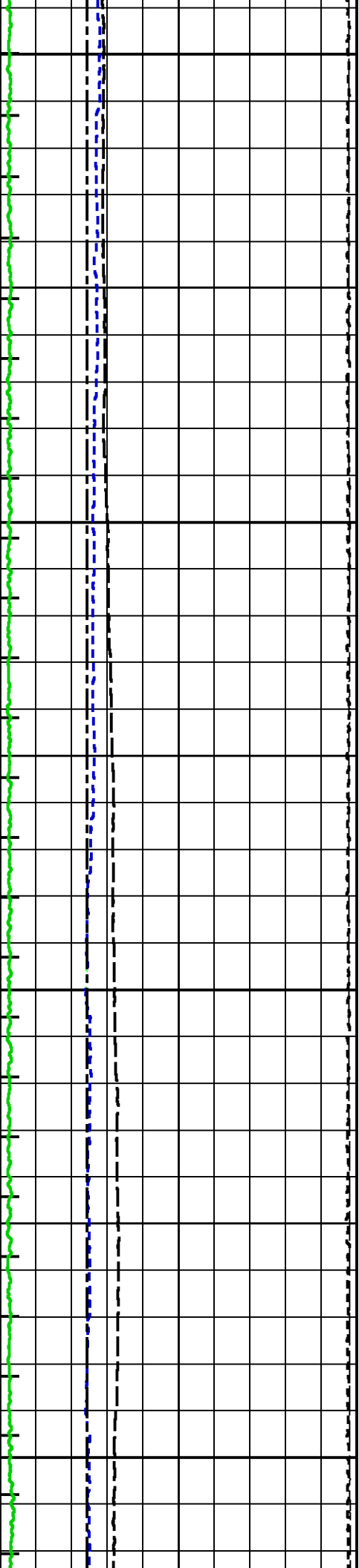


650

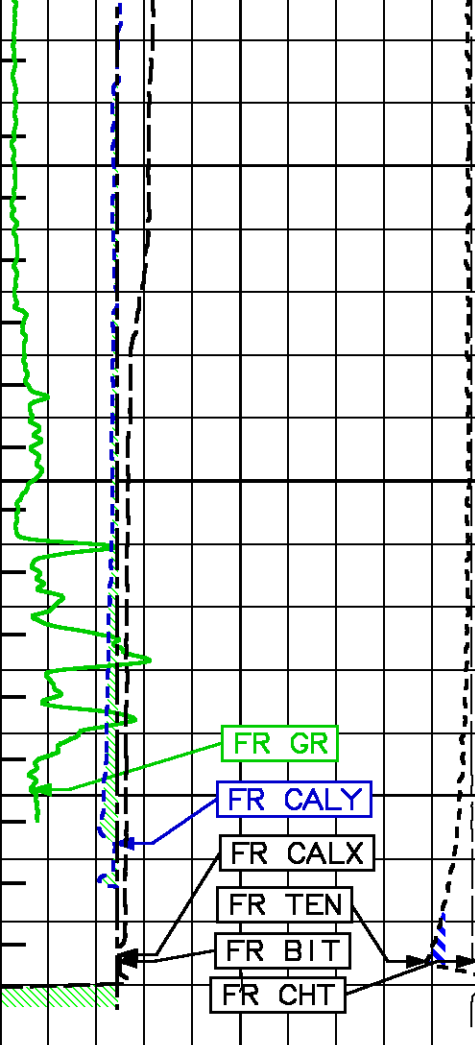
700

750

800



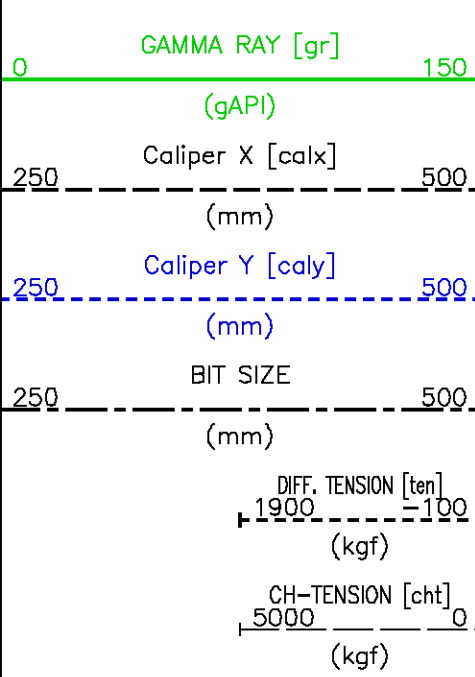
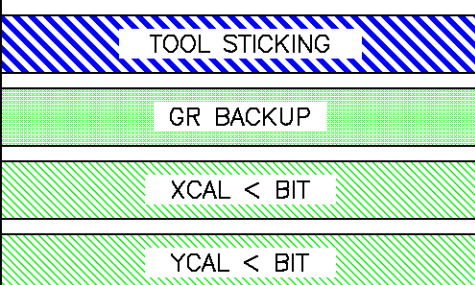




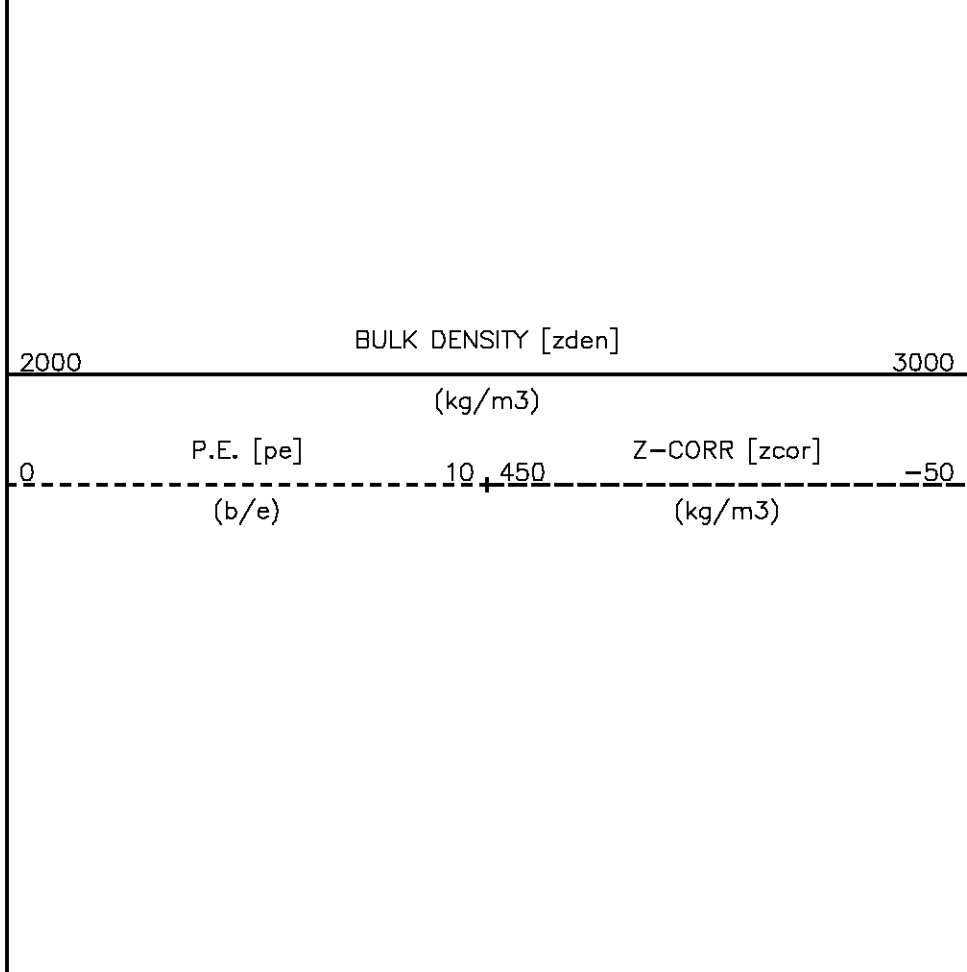
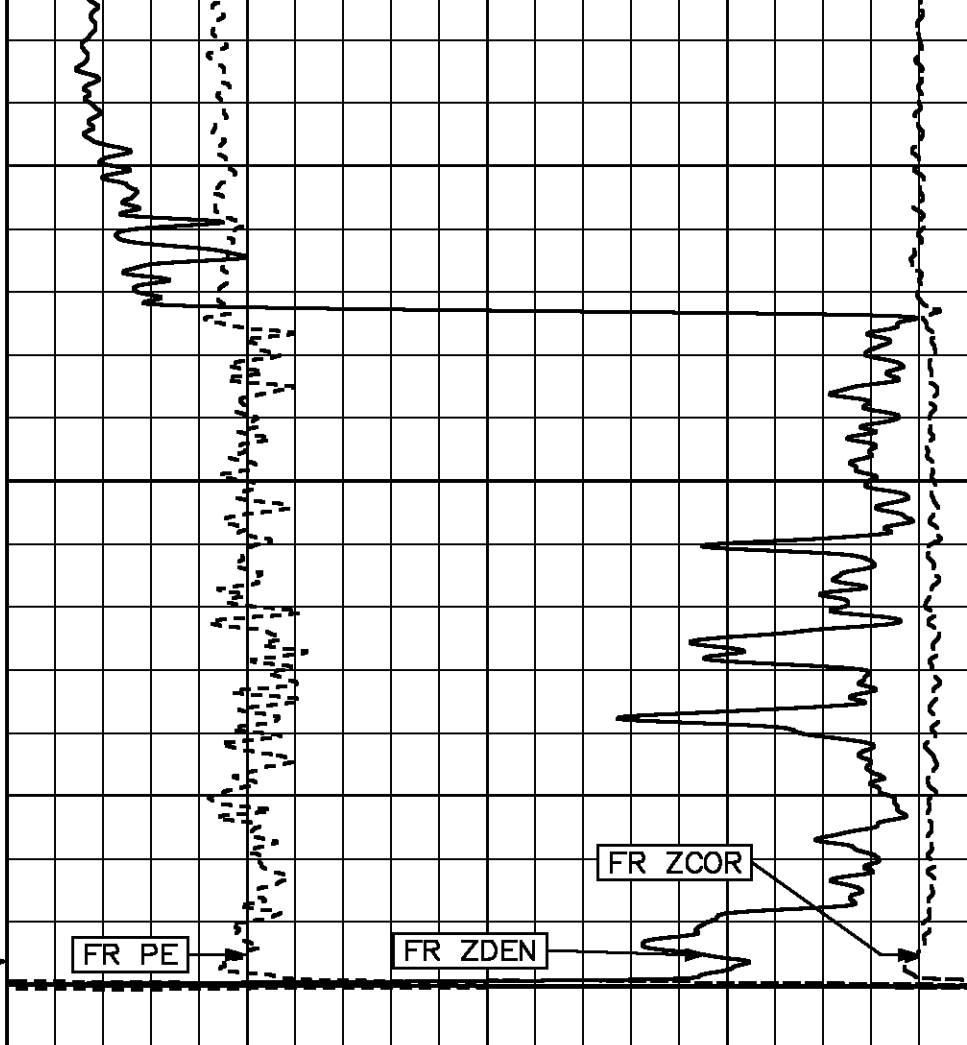
850

TD

METERS



MINUTE MARK  
1



MINUTE MARK  
1

# MAIN LOG - SANDSTONE MATRIX

ECLIPS 6.01 Feb 21, 2008  
Updates: 1

Tue Nov 10 07:59:05 2009

Pcrplt /main/62

Cplot

Pdf\_Cpp /main/16

Fileview 5.42

## PARAMETER AND FILTER SUMMARY REPORT

FILE: /dat1a/pass/vul\_rb2/k740d02.prm  
LOGGING MODE: DEPTH DIRECTION: UP  
TOP DEPTH: 181.889 m BOTTOM DEPTH: 890.827 m

### SYMMETRIC FILTER

MEASUREMENT TYPE	PARAMETER	VALUE	UNITS	INTERVAL (m)	
TENSION	FILTER ( )	medium (1)		TOP	BOTTOM
GR	FILTER ( )	medium (1)		''	''

### BOREHOLE & CEMENT

MEASUREMENT TYPE	PARAMETER	VALUE	UNITS	INTERVAL (m)	
BIT SIZE	BIT SIZE	311.000	mm	TOP	BOTTOM

## CURVE DESCRIPTION REPORT

CURVE NAME	CURVE ALIAS	CREATION DATE	CURVE DESCRIPTION
F1:BIT	BIT	Nov 10 03:05:18 2009	BIT SIZE
F1:CALX	CALX	Nov 10 06:58:51 2009	CALIPER FROM X AXIS OF X-Y CALIPER(S)
F1:CALY	CALY	Nov 10 06:58:51 2009	CALIPER FROM Y AXIS OF X-Y CALIPER(S)
F1:CHT	CHT	Nov 10 06:58:51 2009	CABLE HEAD TENSION
F1:CNCSS	CNCSS	Nov 10 06:58:51 2009	BH SIZE CORR. SANDSTONE COMPENSATED NEUTRON POROSITY
F1:GR	GR	Nov 10 03:05:18 2009	GAMMA RAY
F1:MMRK	MMRK	Nov 10 03:05:18 2009	MINUTE MARK
F1:PE	PE	Nov 10 06:58:51 2009	PHOTO ELECTRIC CROSS-SECTION
F1:PZSS	PZSS	Nov 10 06:58:51 2009	POROSITY FOR SANDSTONE MATRIX
F1:TEN	TEN	Nov 10 03:05:18 2009	DIFFERENTIAL TENSION
F1:ZCOR	ZCOR	Nov 10 06:58:51 2009	DENSITY CORRECTION

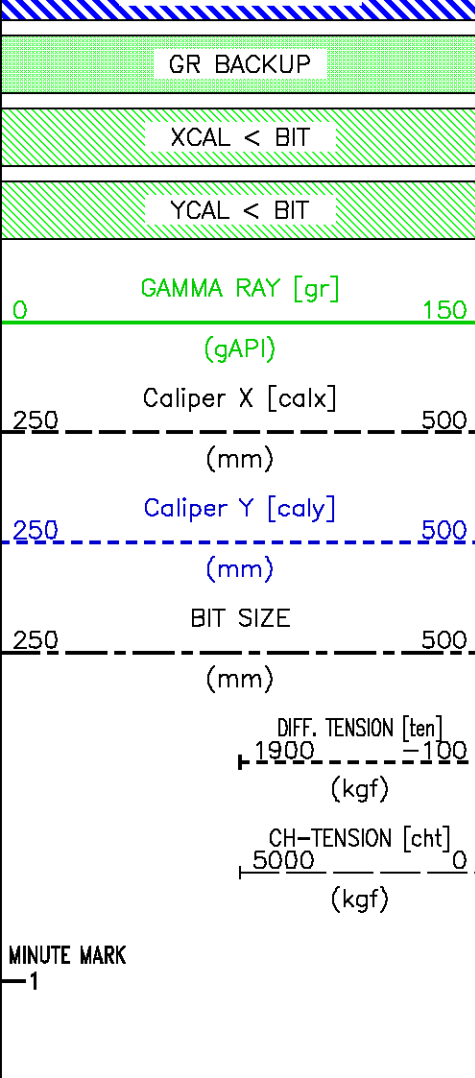
## CURVE MEASURE POINT OFFSET

CURVE	OFFSET (m)	CURVE	OFFSET (m)	CURVE	OFFSET (m)	CURVE	OFFSET (m)
BIT	0.00	CHT	0.00	PE	0.53	ZCOR	0.53
CALX	0.53	CNCSS	3.35	PZSS	0.53		
CALY	9.37	GR	13.64	TEN	0.00		

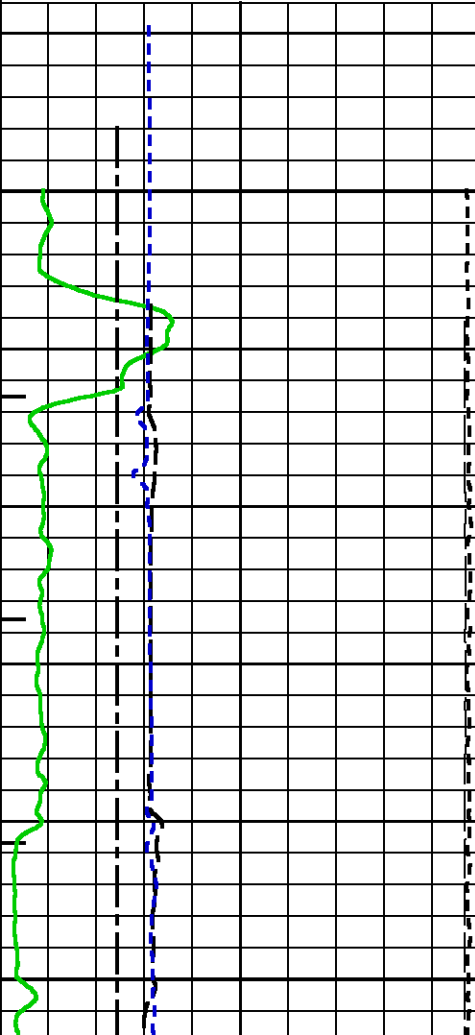
Presentation : cpu1:/dat1a/pass/vul\_rb2/zdl\_ss45\_main.pdf [1:240 Scale]  
Plot Interval : 194.767 - 893.293 Meters

Data File 1 : F1 : cpu1:/dat1a/pass/vul\_rb2/311\_main.xtf  
Created On : Nov 10 06:58:51 2009  
Company : VULCAN MINERALS  
Well : VULCAN INVESTCAN RED BROOK #2  
Field : BAY ST. GEORGE BASIN  
File Interval : 192.786 - 893.293 Meters  
Oct : k740d

TOOL STICKING



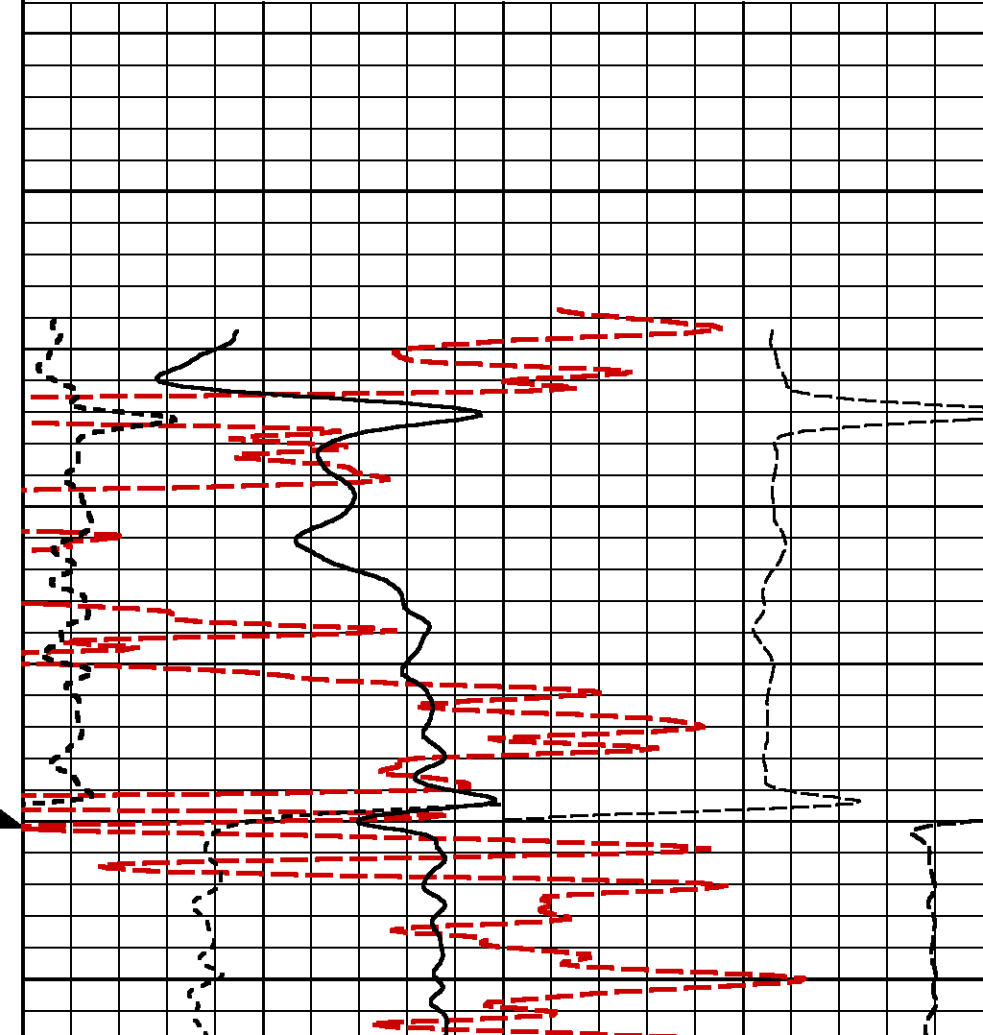
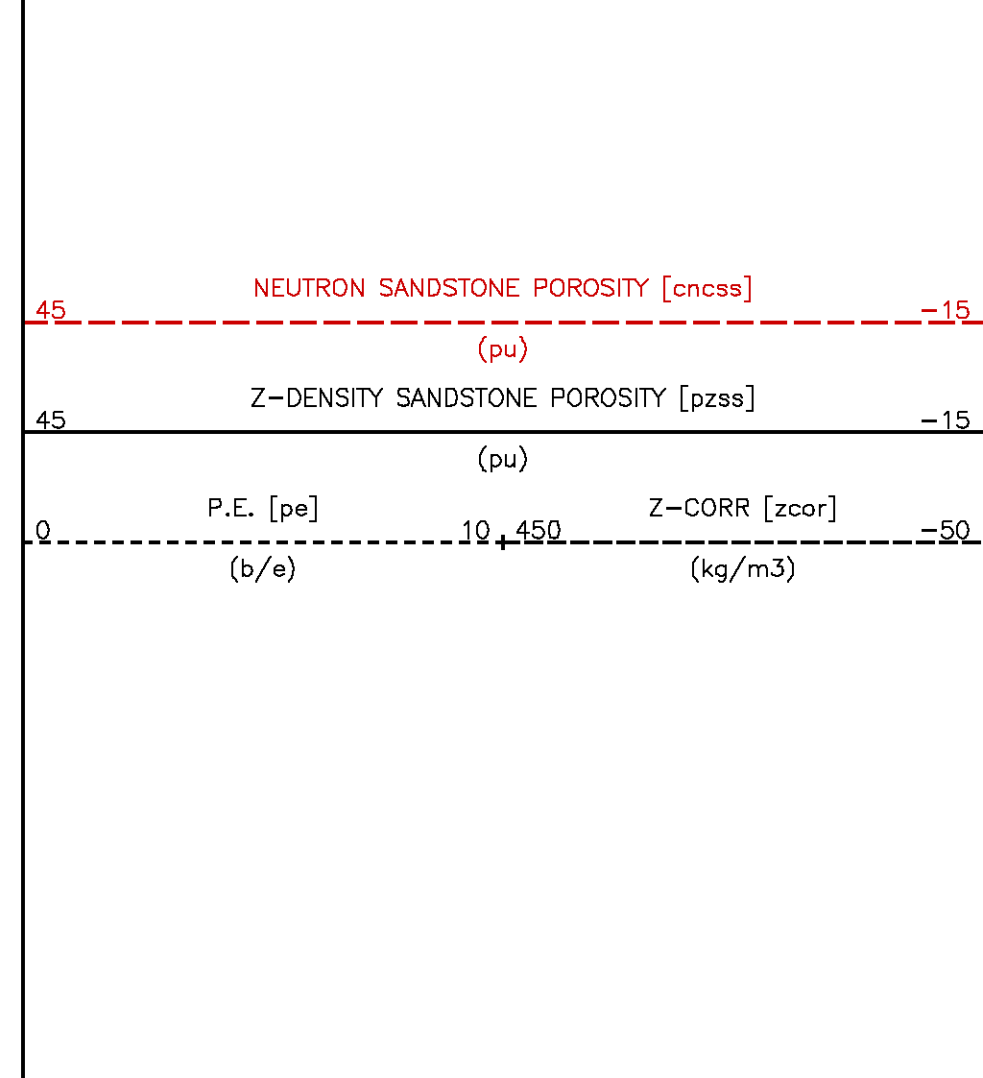
METERS

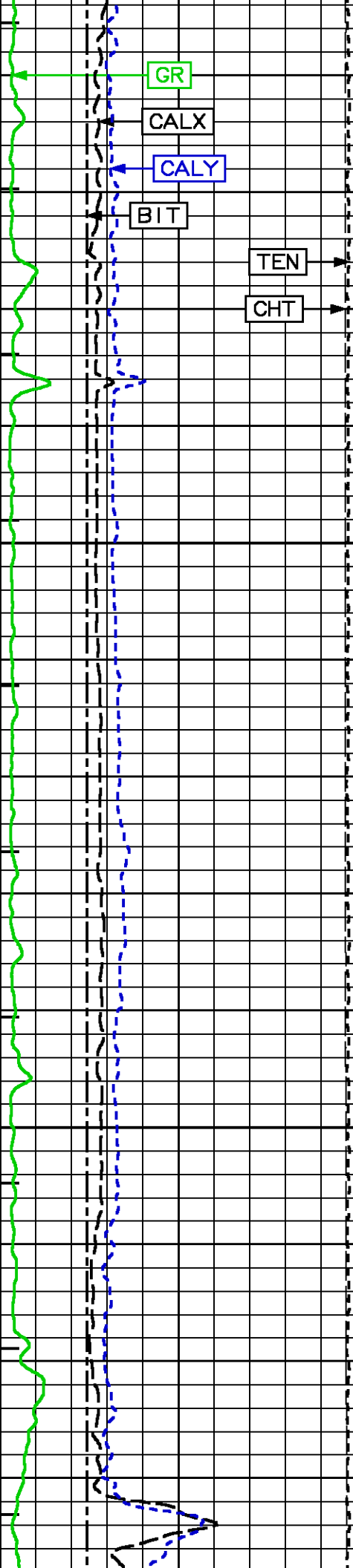


200

CSG

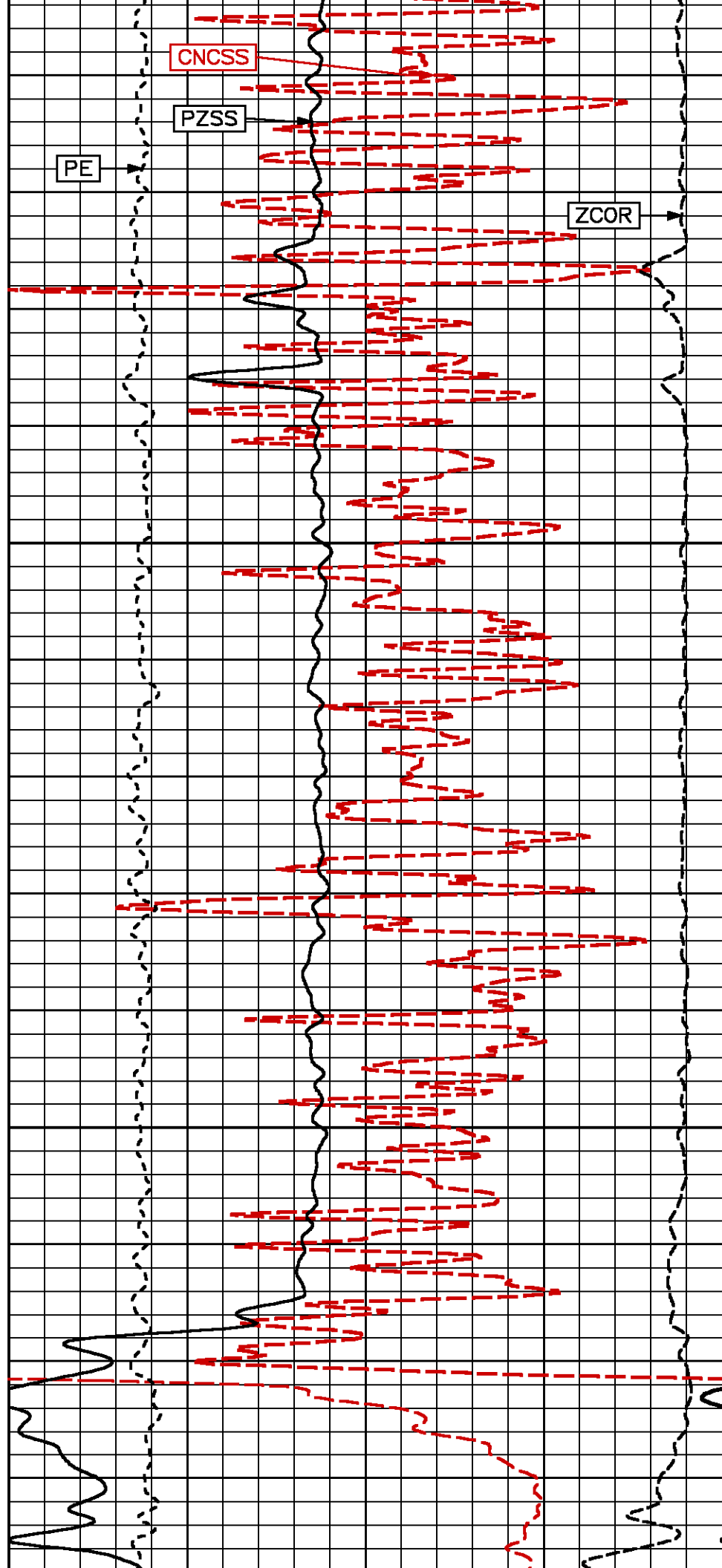
225

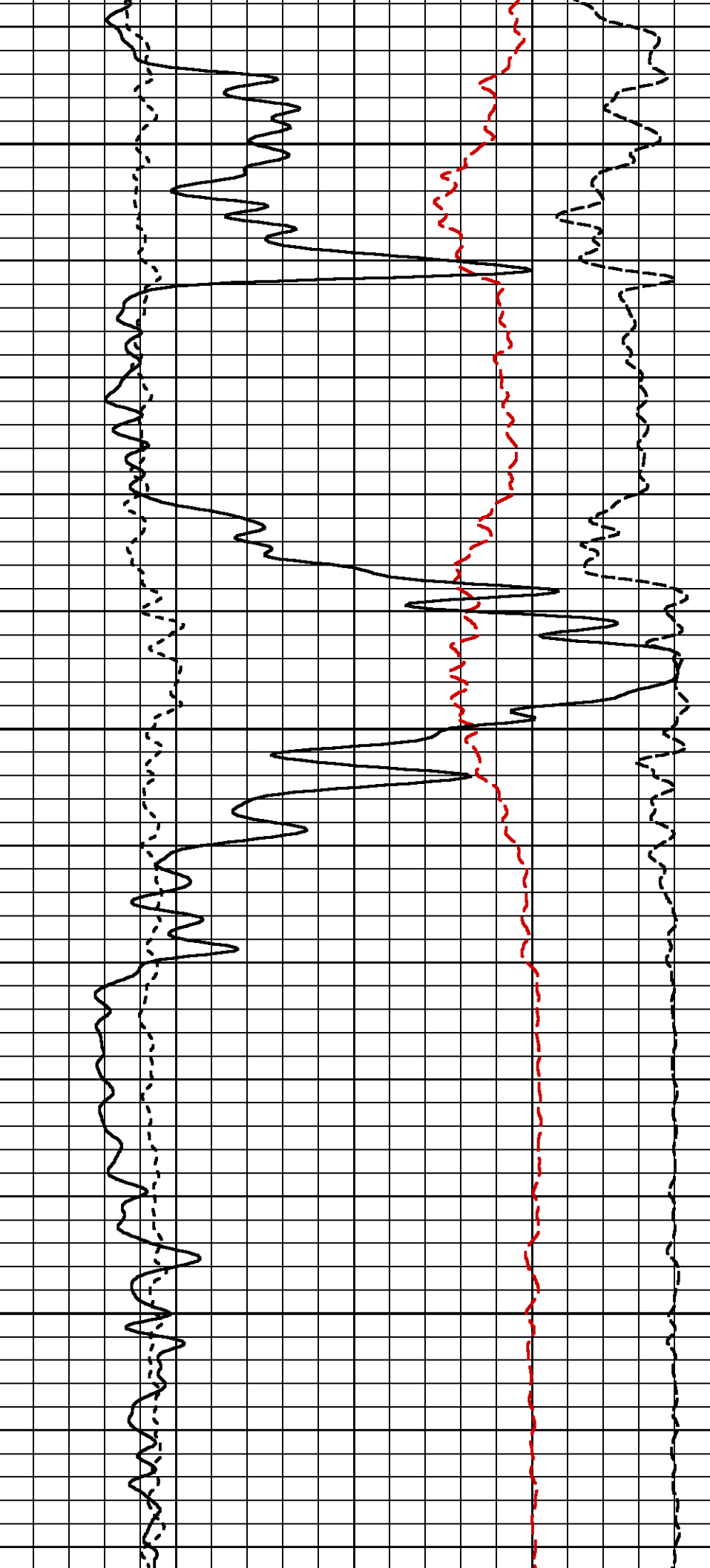




250

275

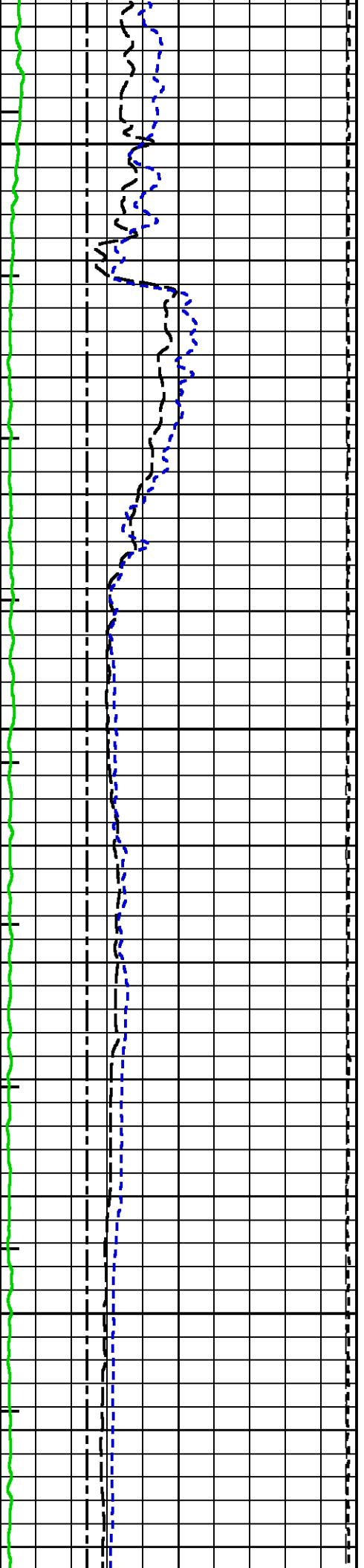


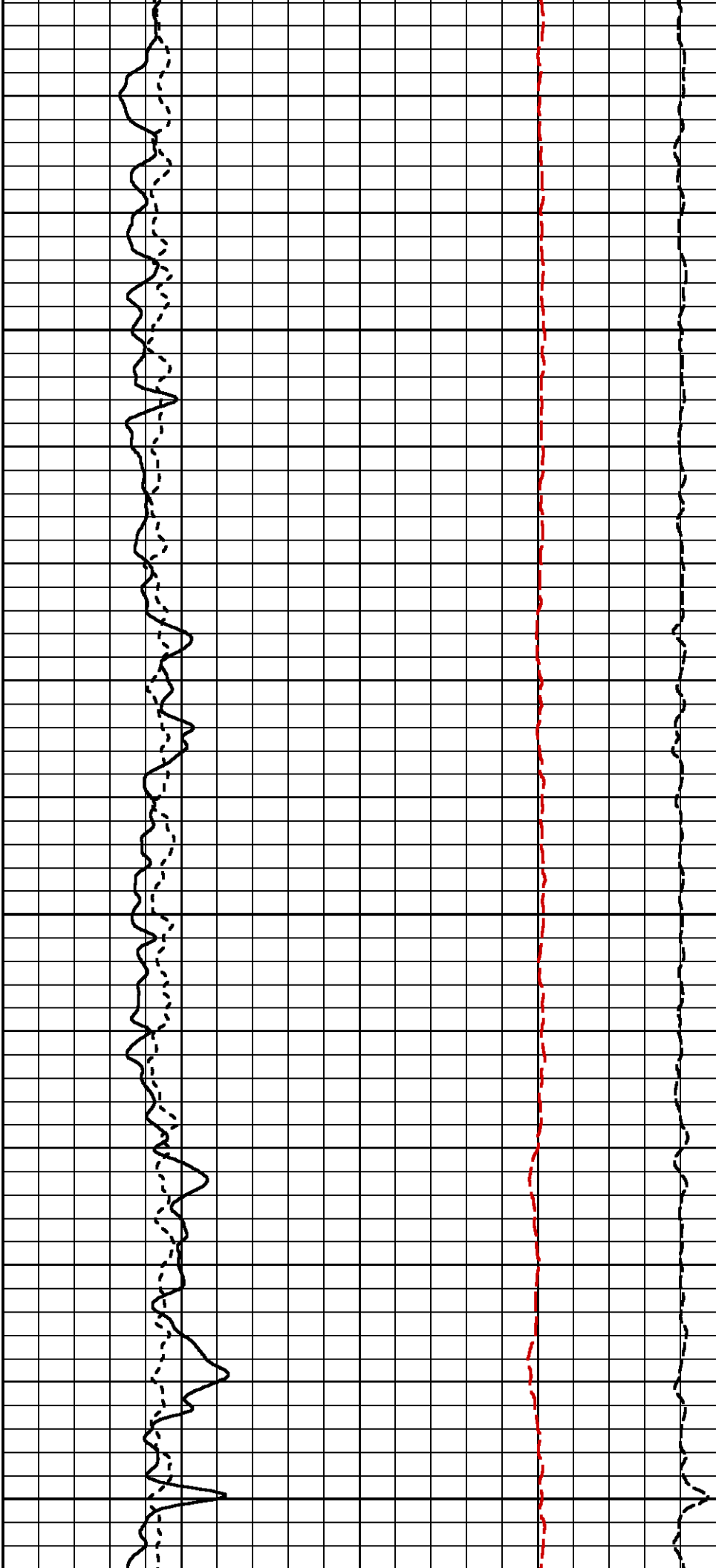


300

325

350

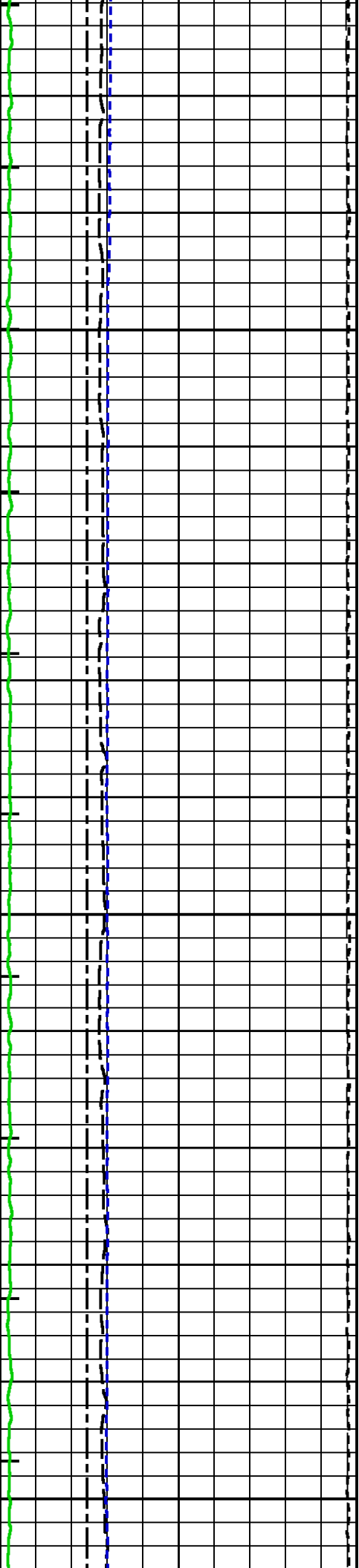




375

400

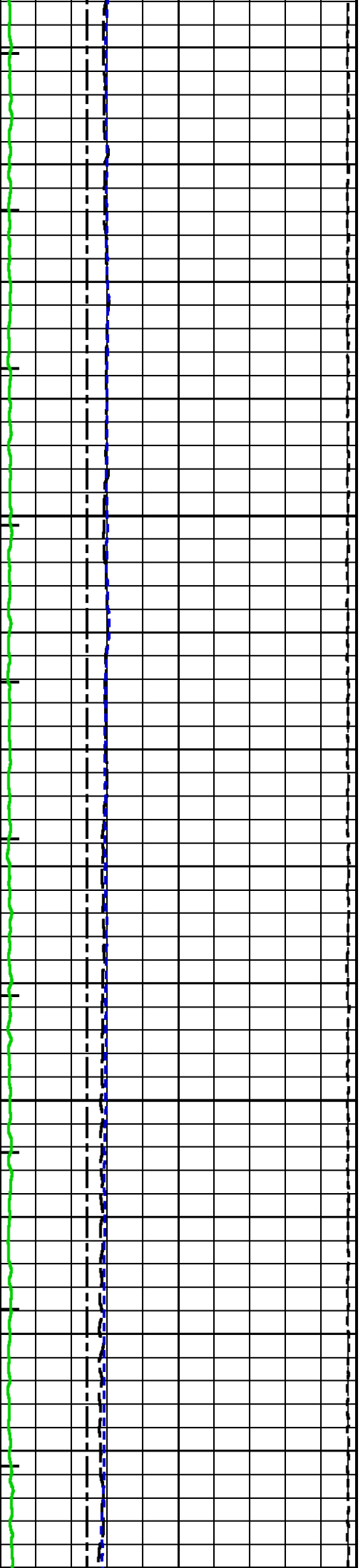
425





450

475



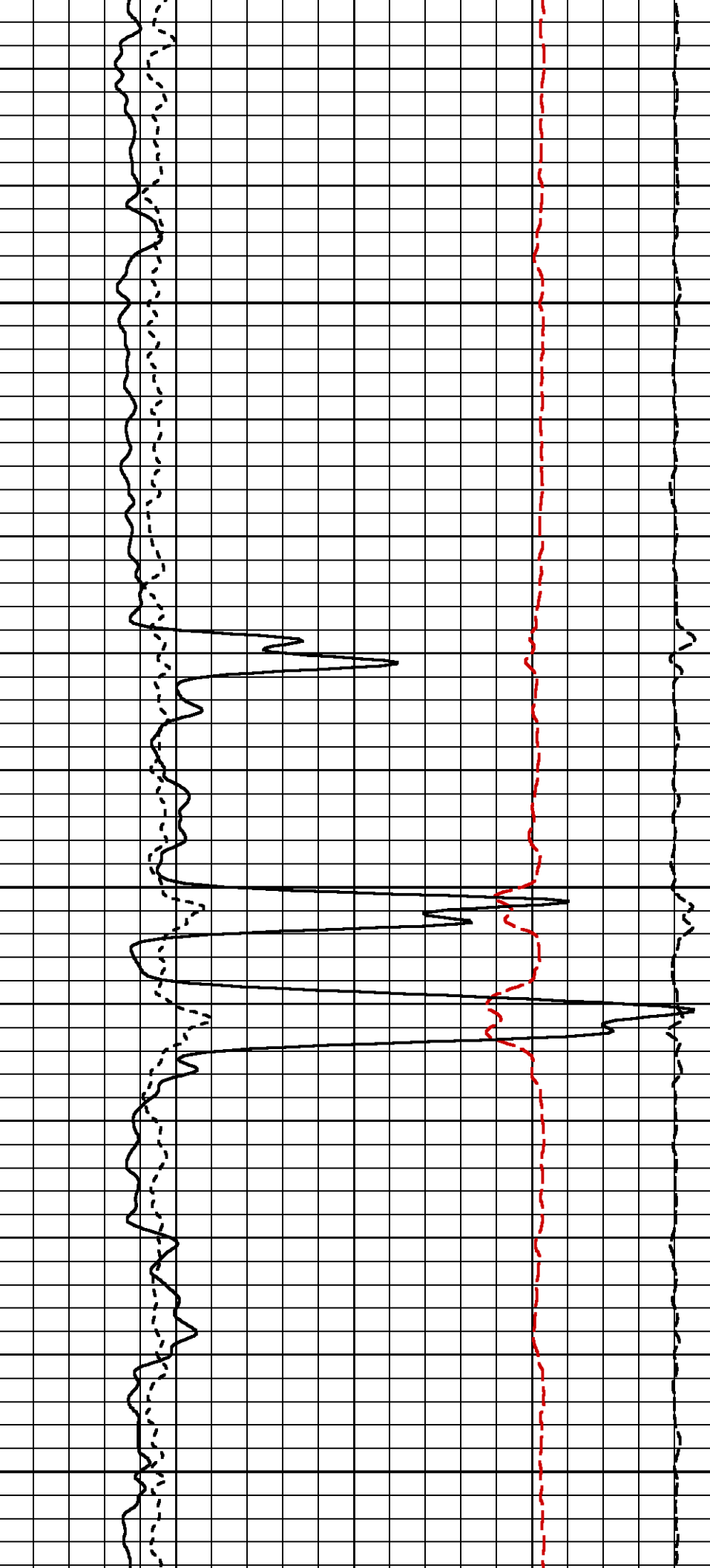


500

525

550

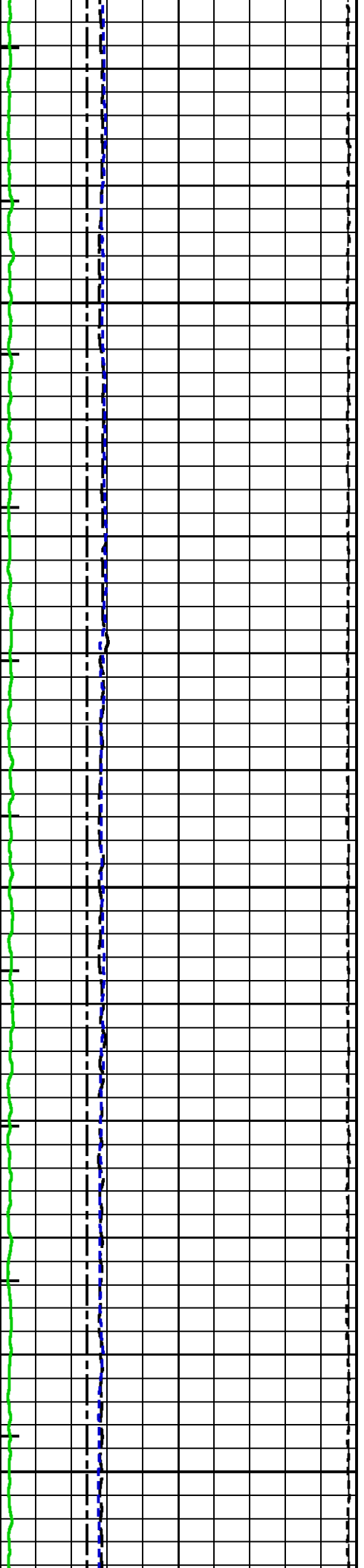




575

600

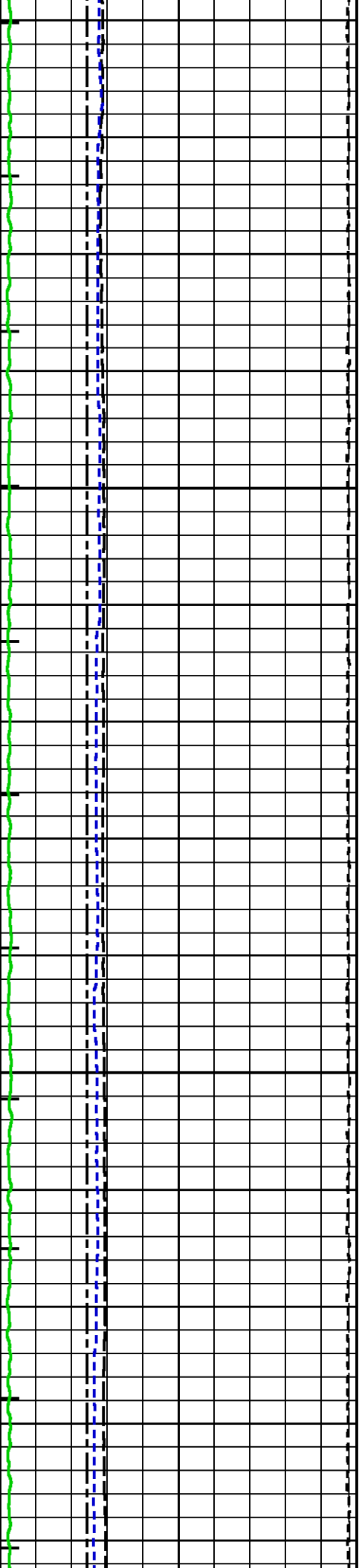
625

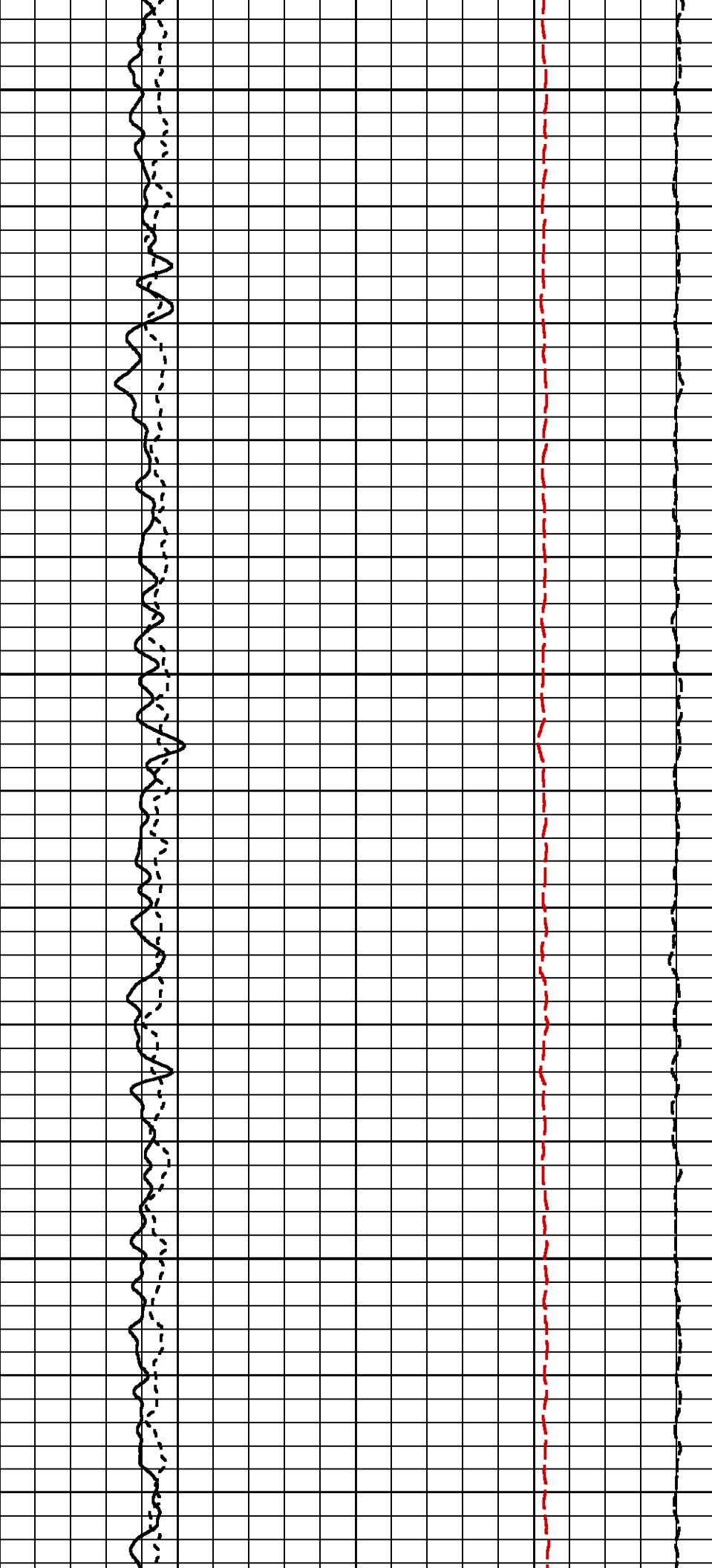




650

675

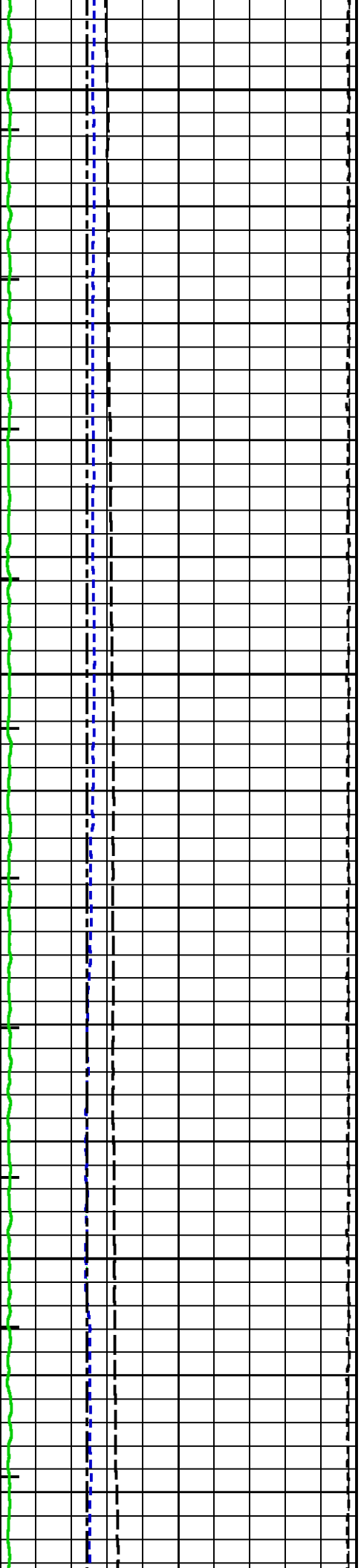


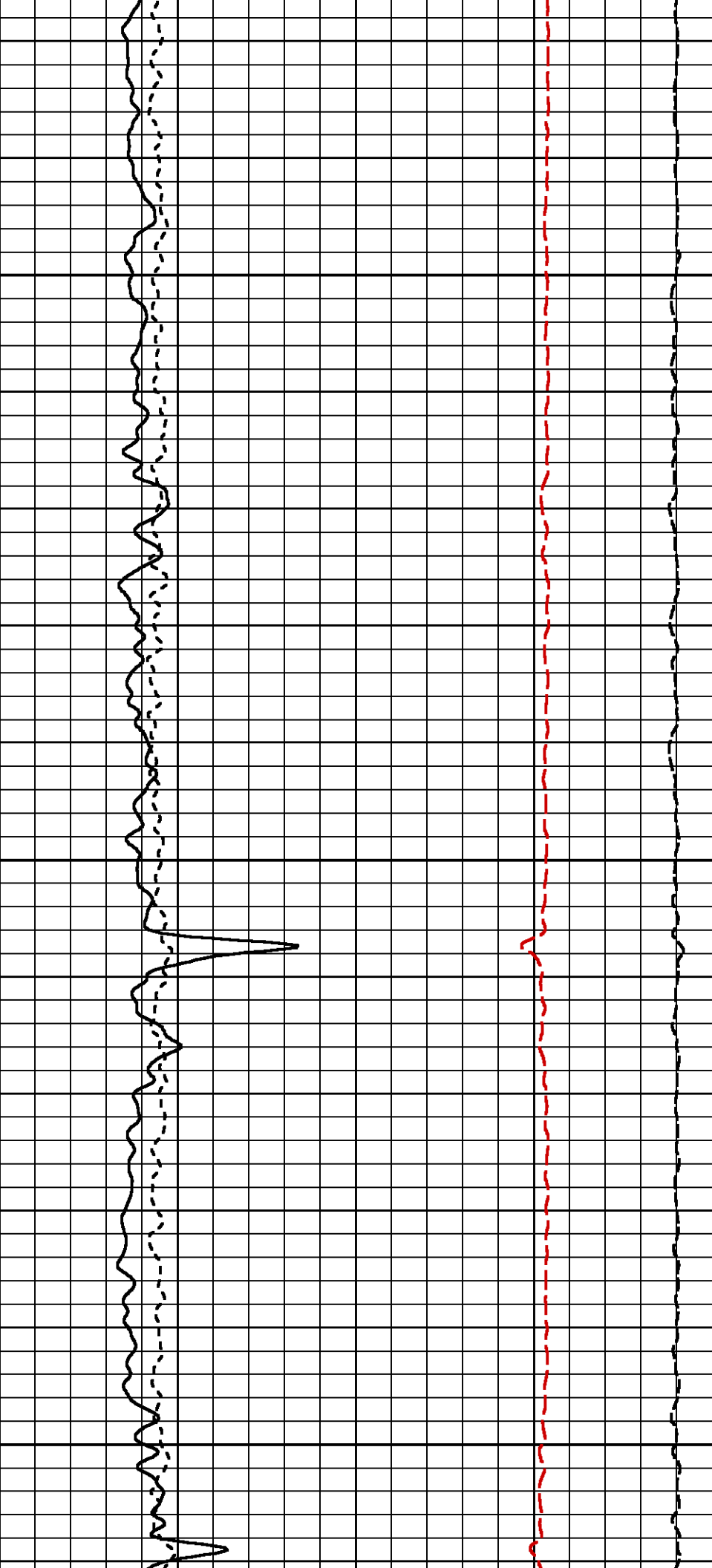


700

725

750

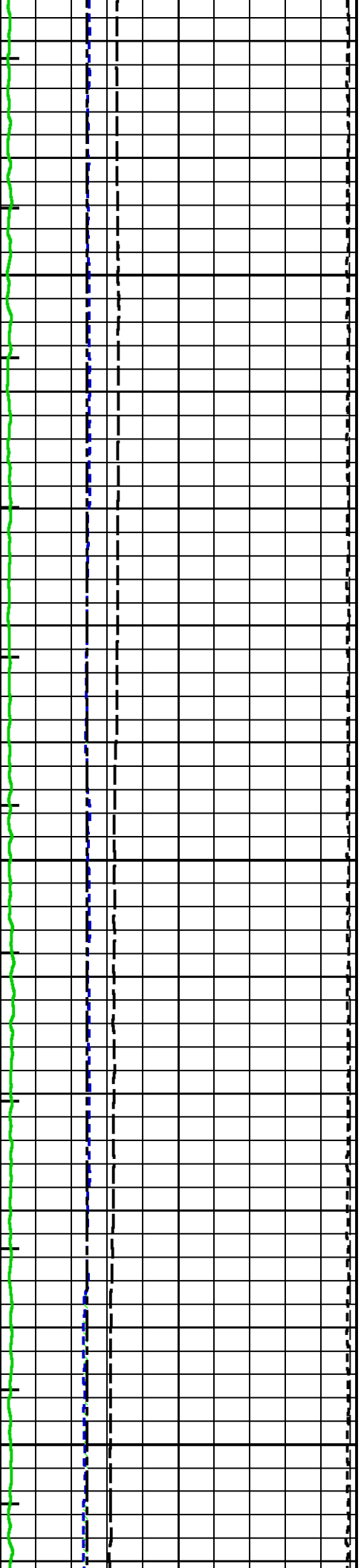


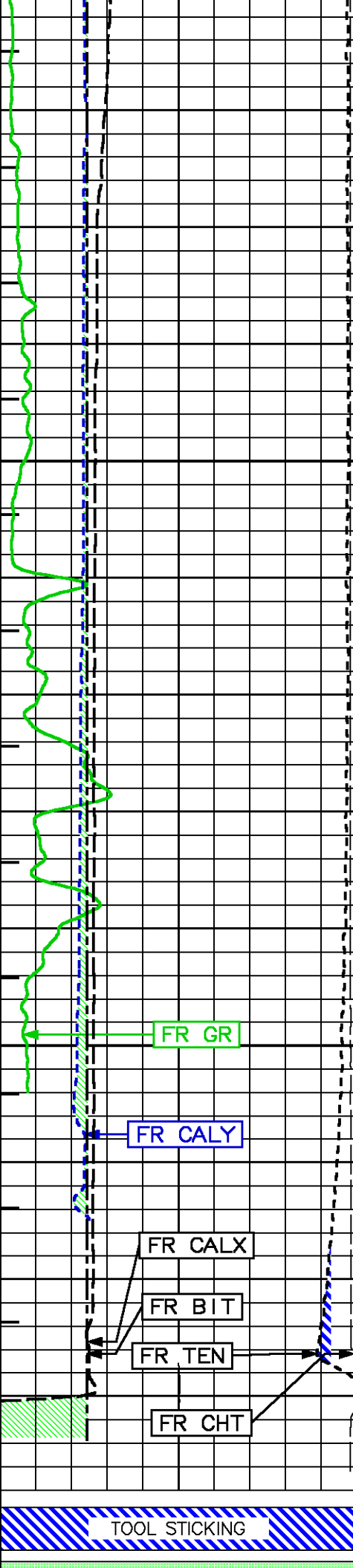


775

800

825

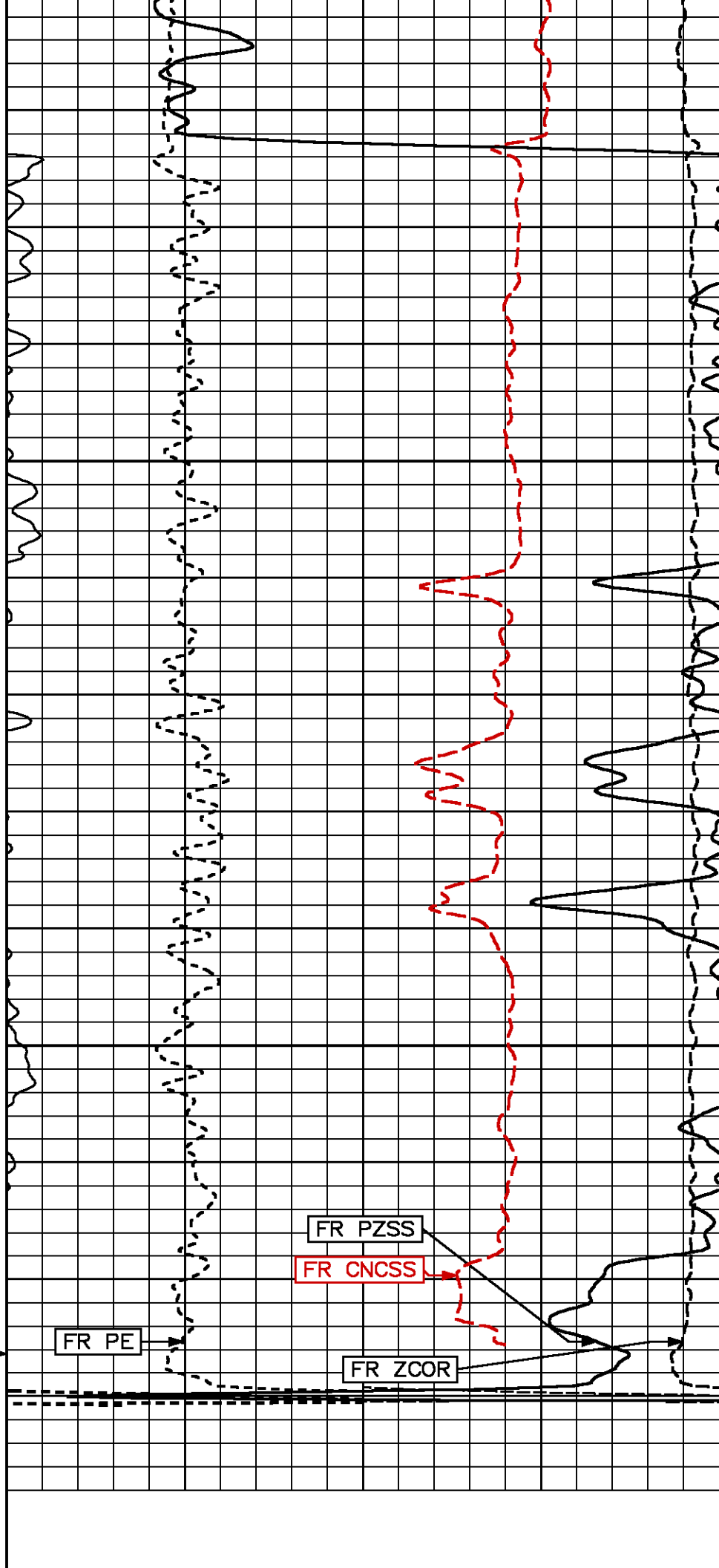


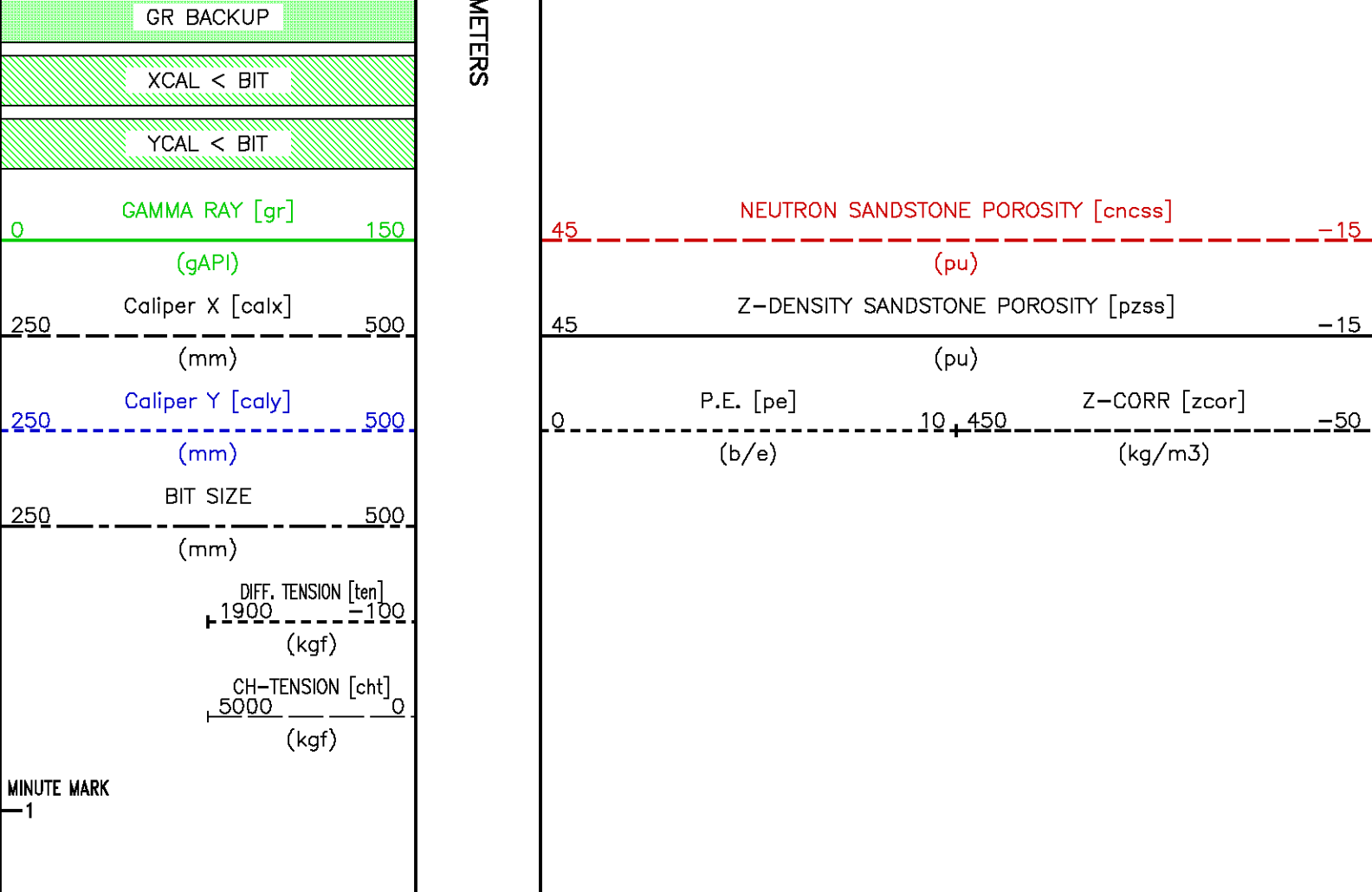


850

875

TD





## REPEAT LOG - SANDSTONE MATRIX

ECLIPS 6.01 Feb 21, 2008  
Updates: 1

Tue Nov 10 08:00:07 2009

Pcrplt /main/62

Cplot

Pdf\_Cpp /main/16

Fileview 5.42

### PARAMETER AND FILTER SUMMARY REPORT

FILE: /dat1a/pass/vul\_rb2/k740d01.prm  
LOGGING MODE: DEPTH DIRECTION: UP  
TOP DEPTH: 812.521 m BOTTOM DEPTH: 890.549 m

### SYMMETRIC FILTER

MEASUREMENT TYPE	PARAMETER	VALUE	UNITS	INTERVAL (m)	
TENSION GR	FILTER ()	medium (1)		TOP	BOTTOM
	FILTER ()	medium (1)		"	"

### BOREHOLE & CEMENT

MEASUREMENT TYPE	PARAMETER	VALUE	UNITS	INTERVAL (m)	
BIT SIZE	BIT SIZE	311.000	mm	TOP	BOTTOM

### PARAMETER AND FILTER SUMMARY REPORT

FILE: /dat1a/pass/vul\_rb2/k970a02.prm  
LOGGING MODE: DEPTH DIRECTION: UP  
TOP DEPTH: 807.478 m BOTTOM DEPTH: 892.020 m

### SYMMETRIC FILTER

MEASUREMENT TYPE	PARAMETER	VALUE	UNITS	INTERVAL (m)	
CHT	FILTER ( )	medium (1)		TOP	BOTTOM
GR MED RES	FILTER ( )	medium (1)		''	''
CALIPER	FILTER ( )	medium (1)		''	''
TENSION	FILTER ( )	medium (1)		''	''
CN MED RES	FILTER ( )	medium (1)		''	''
ZDL MED RES	FILTER (hrd1*)	medium		''	''
	FILTER (hrd1s*)	medium		''	''
	FILTER (hrd2*)	medium		''	''
	FILTER (hrd2s*)	medium		''	''
	FILTER (soft*)	medium		''	''

### BOREHOLE & CEMENT

MEASUREMENT TYPE	PARAMETER	VALUE	UNITS	INTERVAL (m)	
CASING - BOREHOLE & CEMENT VOLUME	CASING O.D.	244.500	mm	TOP	BOTTOM
	CASING THICKNESS	8.400	mm	''	''
X-Y COMBINED CALIPER PROCESSING-FOCM	SY Caliper - FOCUS	X-Axis		''	''
BIT SIZE	BIT SIZE	311.000	mm	''	''
BOREHOLE CORR DIAMETER SOURCE	CALIPER/FIXED DIA. (cnbh*)	USE CALIPER		''	''
BOREHOLE CORR DIAMETER	FIXED DIAMETER (cnbh*)	311.000	mm	''	''

### ACCELERATION PROCESSING

MEASUREMENT TYPE	PARAMETER	VALUE	UNITS	INTERVAL (m)	
ACCEL CORR SWITCH	ACCEL DEPTH CORR	CORRECTION ON		TOP	BOTTOM

### CN PROCESSING

MEASUREMENT TYPE	PARAMETER	VALUE	UNITS	INTERVAL (m)	
CN BOREHOLE CORRECTION	SALINITY	0	ppm	TOP	BOTTOM
	BOREHOLE CORRECTION	ON		''	''
CN CASING & CEMENT CORRECTION	CORRECTION	OFF		''	''
	BIT SIZE BEHIND CSNG	444.500	mm	''	''

### ZDL PROCESSING

MEASUREMENT TYPE	PARAMETER	VALUE	UNITS	INTERVAL (m)	
DENSITY POROSITY	RHOfluid	1.000	g/cm3	TOP	BOTTOM
	RHOmatrix (sand)	2.650	g/cm3	''	''

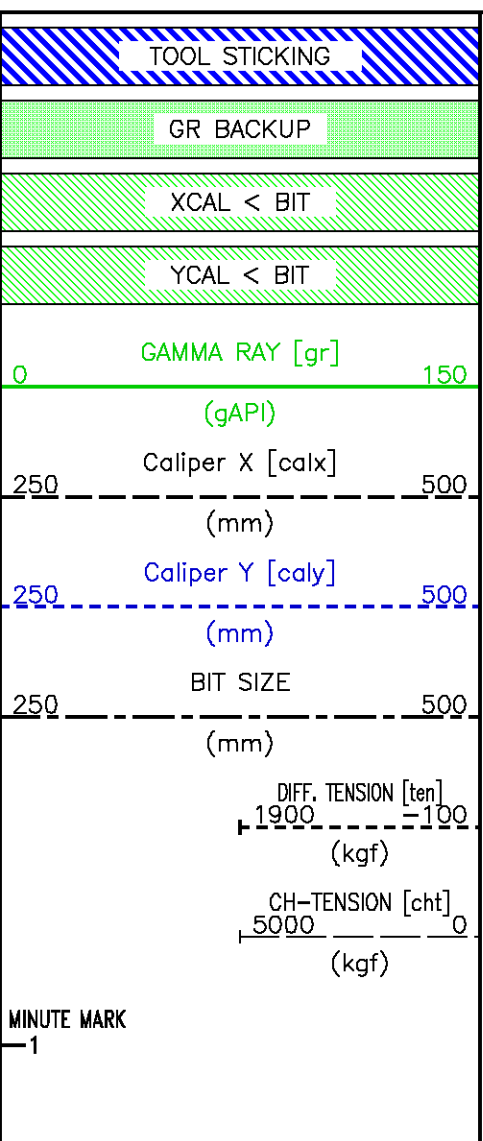
### CURVE DESCRIPTION REPORT

CURVE NAME	CURVE ALIAS	CREATION DATE	CURVE DESCRIPTION
F1:BIT	BIT	Nov 10 02:46:03 2009	BIT SIZE
F1:CALX	CALX	Nov 10 06:43:56 2009	CALIPER FROM X AXIS OF X-Y CALIPER(S)
F1:CALY	CALY	Nov 10 06:43:56 2009	CALIPER FROM Y AXIS OF X-Y CALIPER(S)
F1:CHT	CHT	Nov 10 06:43:56 2009	CABLE HEAD TENSION
F1:CNCSS	CNCSS	Nov 10 06:43:56 2009	BH SIZE CORR. SANDSTONE COMPENSATED NEUTRON POROSITY
F1:GR	GR	Nov 10 02:46:03 2009	GAMMA RAY
F1:MMRK	MMRK	Nov 10 02:46:03 2009	MINUTE MARK
F1:PE	PE	Nov 10 06:43:56 2009	PHOTO ELECTRIC CROSS-SECTION
F1:PZSS	PZSS	Nov 10 06:43:56 2009	POROSITY FOR SANDSTONE MATRIX
F1:TEN	TEN	Nov 10 02:46:03 2009	DIFFERENTIAL TENSION
F1:ZCOR	ZCOR	Nov 10 06:43:56 2009	DENSITY CORRECTION

### CURVE MEASURE POINT OFFSET

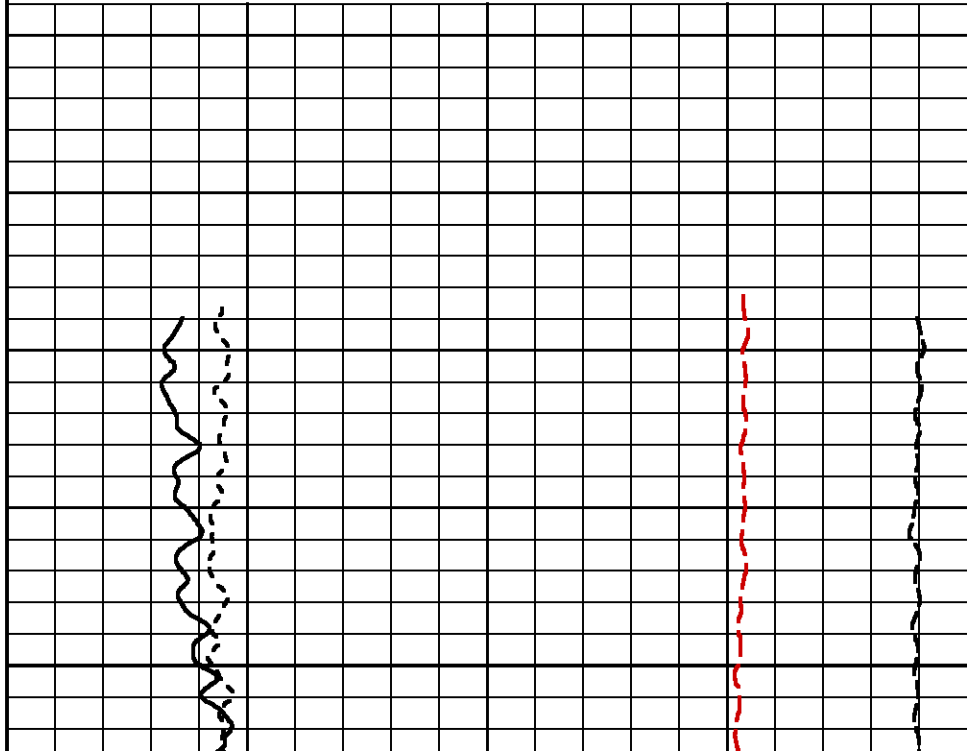
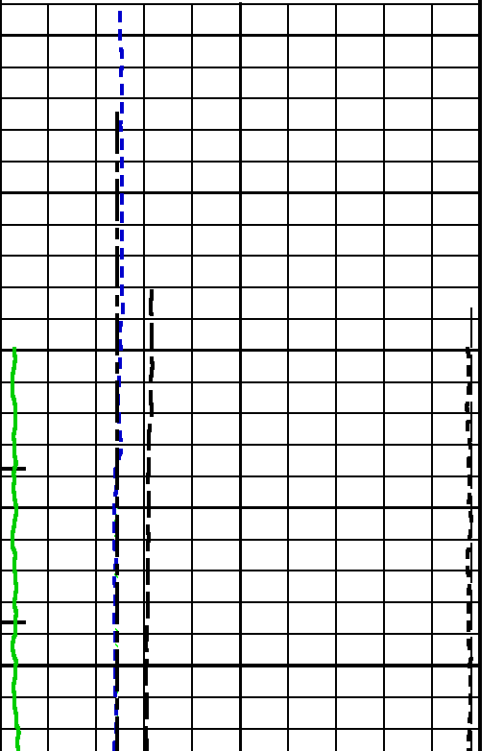
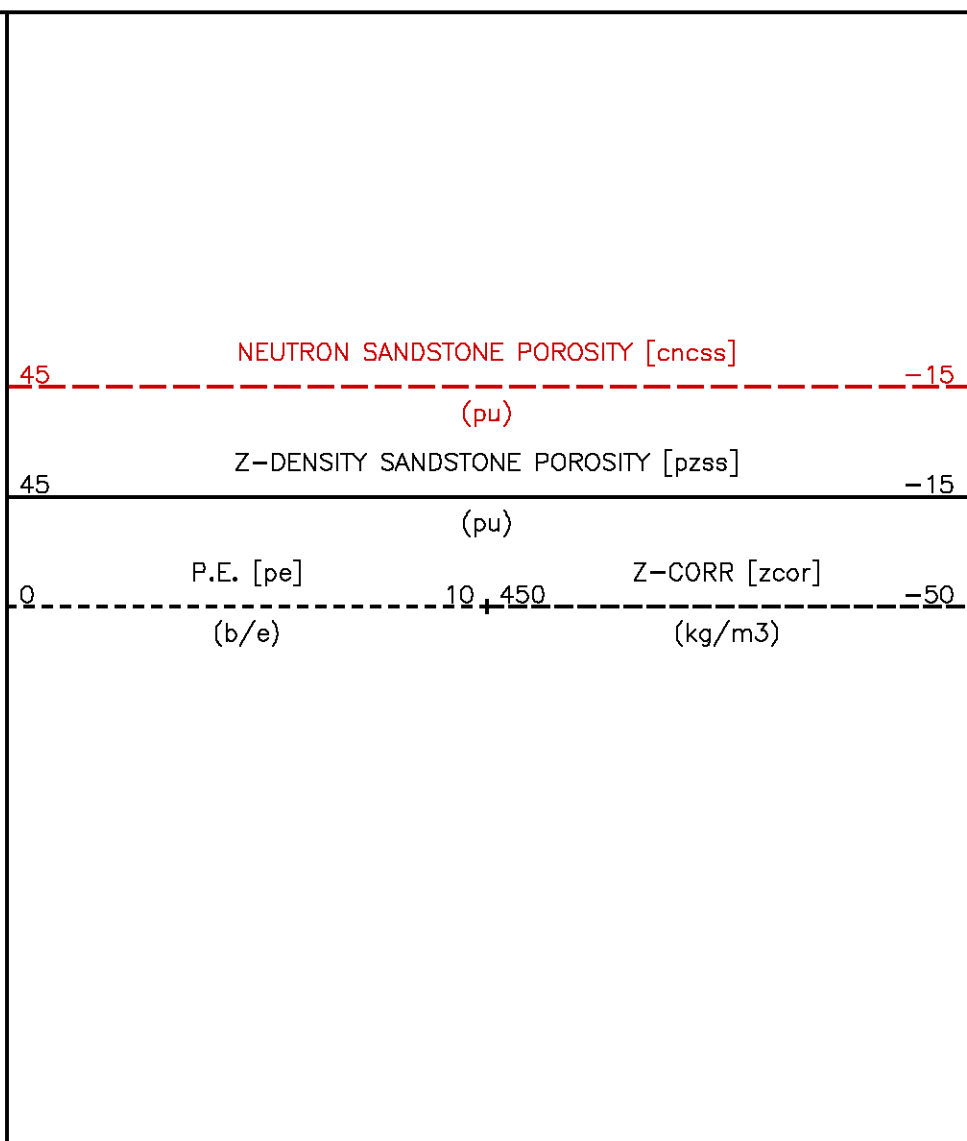
CURVE	OFFSET (m)	CURVE	OFFSET (m)	CURVE	OFFSET (m)	CURVE	OFFSET (m)
BIT	0.00	CHT	0.00	PE	0.53	ZCOR	0.53
CALX	0.53	CNCSS	3.35	PZSS	0.53		
CALY	9.37	GR	13.64	TEN	0.00		

Data File 1 : F1 : cpu1:/dat1a/pass/vul\_rb2/311\_rpt.xtf  
Created On : Nov 10 06:43:56 2009  
Company : VULCAN MINERALS  
Well : VULCAN INVESTCAN RED BROOK #2  
Field : BAY ST. GEORGE BASIN  
File Interval : 802.31 - 893.293 Meters  
Oct : k740d

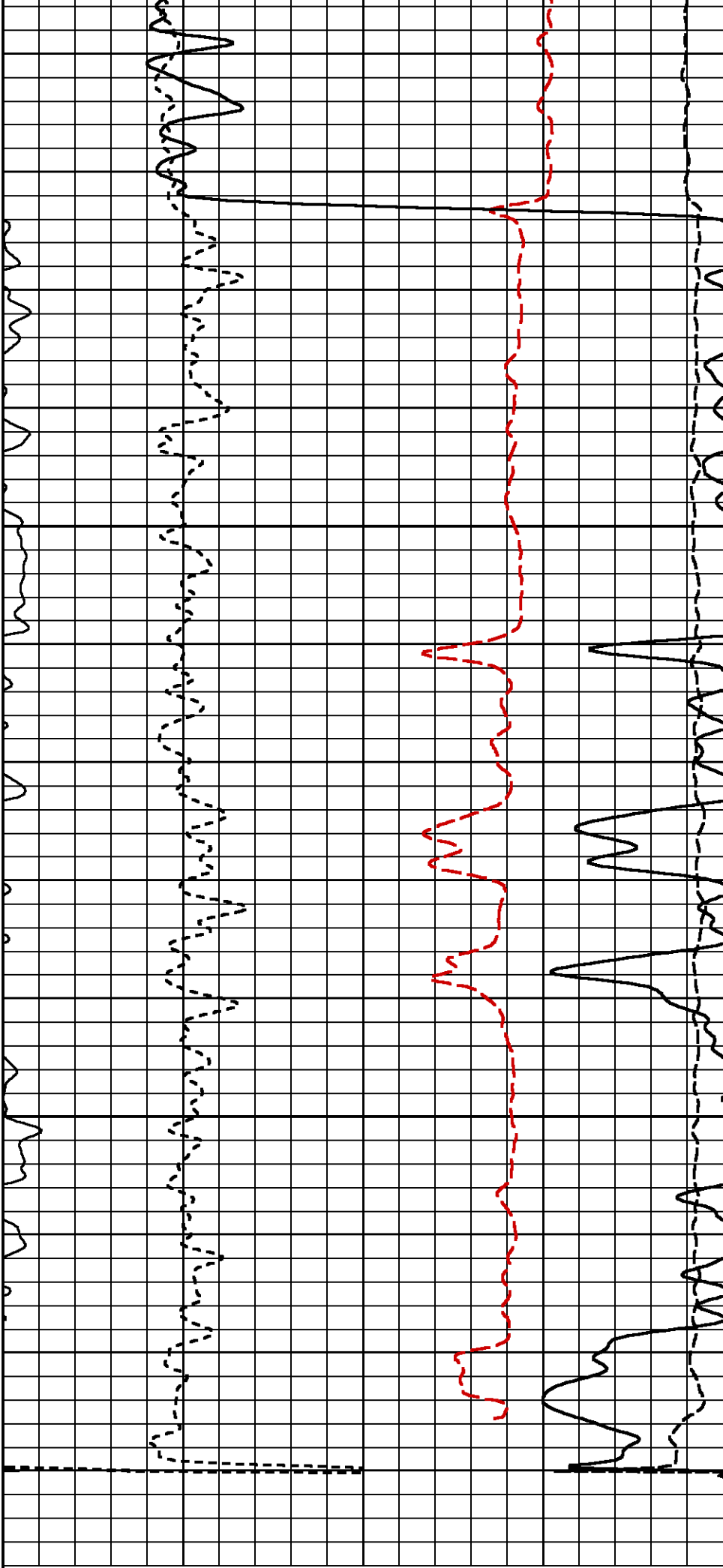


METERS

825

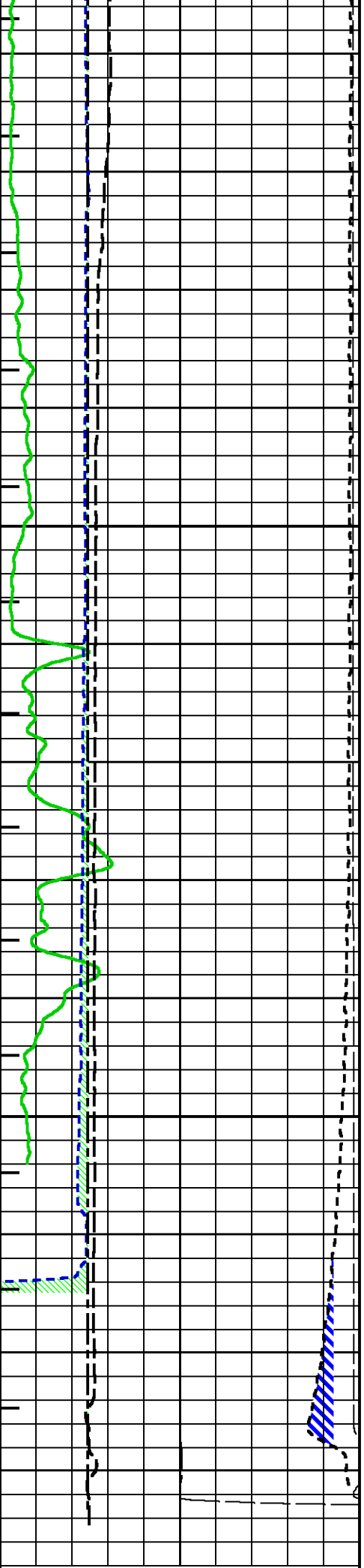


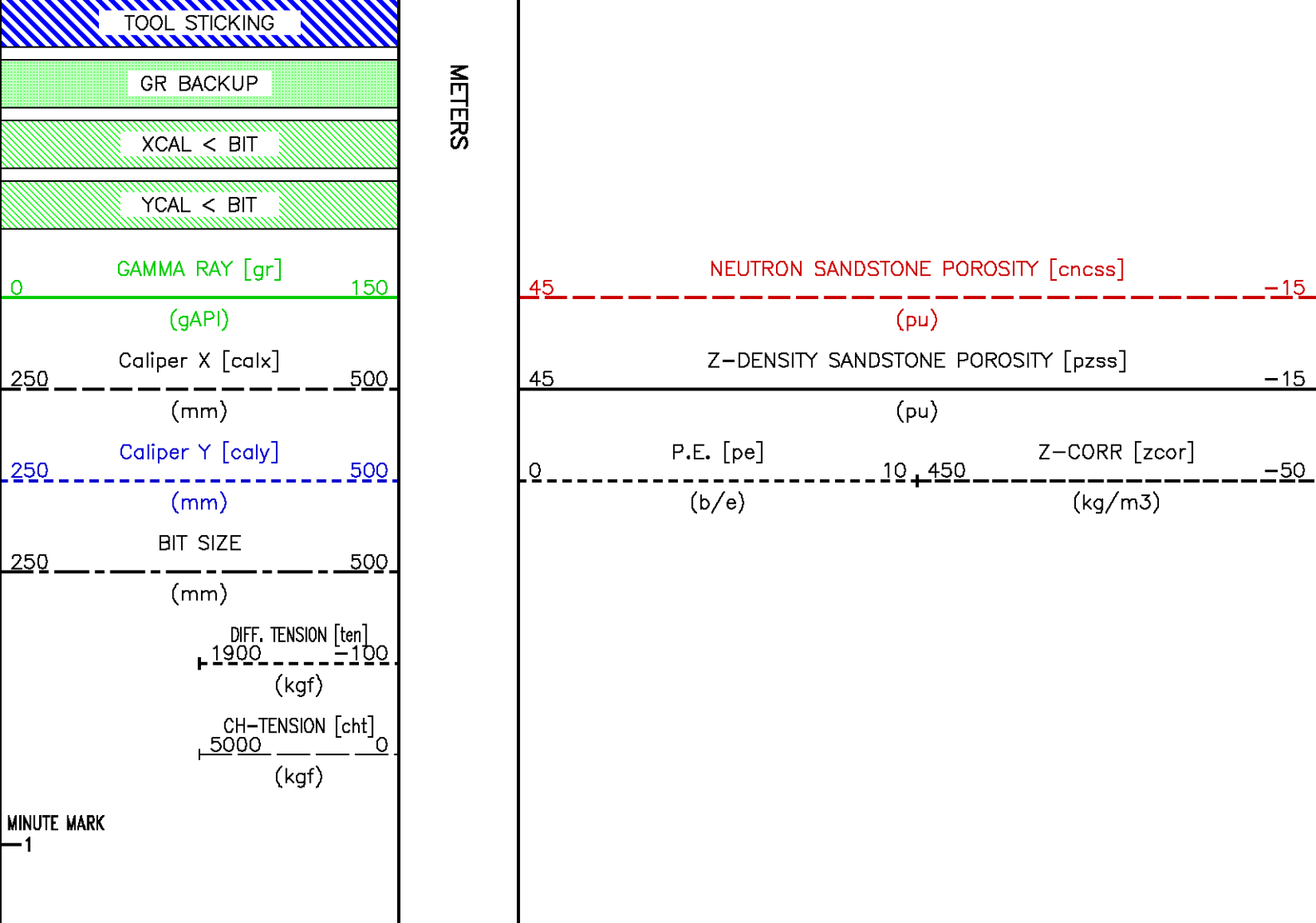




850

875





## CALIBRATION / VERIFICATION SUMMARY

Source File: /dat1a/pass/vul\_rb2/k970a.tp1

### CAL PRIMARY CALIBRATION SUMMARY

TOOL #: 4410XA 10171015

DATE/TIME PERFORMED: Wed Nov 4 11:44:57 2009

UNIT #: 3885TA HL4126

	SIZE (mm)	VALUE	MULTIPLIER	ADD
SMALL RING	203.200	418		
LARGE RING	304.800	552	26.09531	-1224.31909
			23.62200 27.17800	

## CAL BEFORE LOG VERIFICATION SUMMARY

TOOL #: 4410XA 10171015 DATE/TIME PERFORMED: Tue Nov 10 06:12:44 2009 DAYS SINCE CAL: 5

UNIT #: 3885TA HL4126

ACT SIZE (mm)	VALUE	MULTIPLIER	ADD	SIZE (mm)
327.000	591.5	26.09531	-1223.60278	327.02
				318.11 335.89

## CAL AFTER LOG VERIFICATION SUMMARY

TOOL #: 4410XA 10171015 DATE/TIME PERFORMED: Tue Nov 10 07:48:28 2009 DAYS SINCE CAL: 5

UNIT #: 3885TA HL4126

ACT SIZE (mm)	VALUE	MULTIPLIER	ADD	SIZE (mm)
327.000	593.1	26.09531	-1265.35535	327.02
				318.11 335.89

## GR PRIMARY CALIBRATION SUMMARY

Tool #: 3518EG 10386766 DATE/TIME PERFORMED: Thu Oct 29 20:27:44 2009

Unit #: 3885TA HL4126 Jlg Series: 4702NK WA-724

Background	Calibrator ON	Jlg Value (gAPI)	Mult	Background	Calibrator ON (gAPI)
239.91	913.54	185	0.275	65.89	250.89
			0.230 0.280		

## GR PRIMARY VERIFICATION SUMMARY

NOT DONE

## GR BEFORE LOG VERIFICATION SUMMARY

TOOL #: 3518EG 10386766 DATE/TIME PERFORMED: Tue Nov 10 06:10:43 2009 DAYS SINCE CAL: 11

UNIT #: 3885TA HL4126 Jlg: INTRNL N/A

Counts	TEMP (degC)	HV (V)
976.67	20.24	1361.74
929.00 1027.00	280.00	1237.00 1512.00

## GR AFTER LOG VERIFICATION SUMMARY

## GR AFTER LOG VERIFICATION SUMMARY

TOOL #: 3518EG 10386766 DATE/TIME PERFORMED: Tue Nov 10 07:49:25 2009 DAYS SINCE CAL: 11

UNIT #: 3885TA HL4126 Jlg: INTRNL N/A

Counts		TEMP (degC)	HV (V)	
976.67		22.31	1361.74	
929.00	1027.00	280.00	1237.00	1512.00

## CN PRIMARY CALIBRATION SUMMARY

TOOL #: 2436XA 402534 DATE/TIME PERFORMED: Thu Oct 29 21:22:55 2009

UNIT #: 3885TA HL4126 CALIBRATOR #: 2437XB 113140 SOURCE #: 4718XA N--930

SSN DT CPS	LSN DT CPS	SSN/LSN	MCF	CNRATIO	CN PU
4814.47	876.33	5.49389	1.04425	5.73700	25.241
			0.95000 1.05000		

## CN BEFORE LOG VERIFICATION SUMMARY

TOOL #: 2436XA 402534 DATE/TIME PERFORMED: Tue Nov 10 06:09:36 2009 DAYS SINCE CAL: 11

UNIT #: 3885TA HL4126 CALIBRATOR #: INTRNL N/A

SSN DT CPS	LSN DT CPS	SSN/LSN	TEMP (degC)	HV (V)	LV (V)
991.73	994.09	0.99762	16.9	1349.8	4.612
		0.95000 1.05000	138.0	1250.0 1450.0	4.300 5.000

## CN AFTER LOG VERIFICATION SUMMARY

TOOL #: 2436XA 402534 DATE/TIME PERFORMED: Tue Nov 10 07:49:40 2009 DAYS SINCE CAL: 11

UNIT #: 3885TA HL4126 CALIBRATOR #: INTRNL N/A

SSN DT CPS	LSN DT CPS	SSN/LSN	TEMP (degC)	HV (V)	LV (V)
990.73	993.09	0.99762	20.2	1349.8	4.612
		0.95000 1.05000	138.0	1250.0 1450.0	4.300 5.000

## CAL PRIMARY CALIBRATION SUMMARY

TOOL #: 2223XA 10130454 DATE/TIME PERFORMED: Thu Oct 29 20:30:22 2009

UNIT #: 3885TA HL4126

	SIZE (mm)	VALUE	MULTIPLIER	ADD
SMALL RING (Arm)	158.000	1112.8		
LARGE RING (Arm)	305.000	2952.0	0.07993	69.05827
PAD CLOSED		2656.4	0.06350	-168.68140

## CAL BEFORE LOG VERIFICATION SUMMARY

TOOL #: 2223XA 10130454 DATE/TIME PERFORMED: Tue Nov 10 06:12:16 2009 DAYS SINCE CAL: 11

UNIT #: 3885TA HL4126

	VALUE	MULTIPLIER	ADD	SIZE (mm)
ARM	3123.6	0.07993	69.05827	318.7
PAD	2807.6	0.06350	-168.68140	9.6

	ACTUAL (mm)	MEASURED (mm)
DIAMETER (arm+pad)	327.000	328.3
		316.8 337.2

## CAL AFTER LOG VERIFICATION SUMMARY

TOOL #: 2223XA 10130454 DATE/TIME PERFORMED: Tue Nov 10 07:48:54 2009 DAYS SINCE CAL: 11

UNIT #: 3885TA HL4126

	VALUE	MULTIPLIER	ADD	SIZE (mm)
ARM	3123.2	0.07993	69.05827	318.7
PAD	2810.4	0.06350	-168.68140	9.8

	ACTUAL (mm)	MEASURED (mm)
DIAMETER (arm+pad)	327.000	328.5
		316.8 337.2

## ZDL PRIMARY CALIBRATION SUMMARY

TOOL: 2223XA 10130454

DATE/TIME PERFORMED: Thu Oct 29 21:09:57 2009

UNIT: 3885TA HL4126

CALB BLKS: 2225XA 112691

CS SRC: 4705XA 11347B

PAD TYPE: PADTYP 7.5" PAD

SS CS PK (Channel)	LS CS PK (Channel)	SS_BKGD (cps)	LS BKGD (cps)
224.2	225.5	1254.4	1712.7
220.0 230.0	220.0 230.0		

	SS (cps)	LS (cps)	SHR	DEN (kg/m3)	CORR (kg/m3)	PE (b/e)
MG (LO PE)	36749.1	12491.4	0.814	1700.000	2.000	1.860
			0.720 0.890			
AL	22973.2	1410.1		2649.000	-19.000	
AL + SHIM	30441.2	2431.8		2550.000	101.000	
MG + SHIM (HI PE)	18480.2	6132.0	0.329			8.260
			0.280 0.360			
RATIO AL + SHIM/AL	1.33	1.72				
	1.30 1.40	1.80 1.80				
RATIO MG/AL	1.60	8.86				
	1.58 1.70	8.55 9.55				

## ZDL BEFORE LOG VERIFICATION SUMMARY

TOOL #: 2223XA 10130454 DATE/TIME PERFORMED: Tue Nov 10 06:10:25 2009 DAYS SINCE CAL: 11

UNIT #: 3885TA HL4126

	TOTAL (cps)	CSPK (Channel)	HV (V)
LS	3342.1	224.9	1437.0
	3332.1 3352.1	220.0 230.0	1250.0 1550.0
SS	22354.8	224.2	1395.0
	22344.8 22364.8	220.0 230.0	1250.0 1550.0
	LV (V)	PAD CURRENT (mA)	
	5.0	83.2	
	4.8 5.2	80.0 120.0	

## ZDL AFTER LOG VERIFICATION SUMMARY



TOOL #: 2223XA 10130454 DATE/TIME PERFORMED: Tue Nov 10 07:49:58 2009 DAYS SINCE CAL: 11

UNIT #: 3885TA HL4126

	TOTAL (cps)	CSPK (Channel)	HV (V)
LS	3342.1	224.9	1438.7
	3332.1 3352.1	220.0 230.0	1250.0 1550.0
SS	22354.8	224.2	1401.7

22344.8	22364.8	220.0	230.0	1250.0	1550.0
---------	---------	-------	-------	--------	--------

LV (V)		PAD CURRENT (mA)	
5.0		83.2	
4.8	5.2	80.0	120.0

 <b>Baker Atlas</b> 	<b>COMPANY</b> <u>VULCAN MINERALS INC.</u> <b>WELL</b> <u>VULCAN INVESTCAN RED BROOK #2</u> <b>FIELD</b> <u>BAY ST.GEORGE BASIN</u> <b>PROVINCE</b> <u>NEWFOUNDLAND AND LABRADOR</u>	<b>FILE NO:</b> <hr/> <b>API NO:</b> <hr/>
	<b>LOCATION:</b>  <b>BH LOC. LSD:</b> <b>LAT</b> <u>48.2679591667</u> <b>LONG</b> <u>-58.7501141667</u>	<b>ELEVATIONS:</b> <b>KB</b> 61.8 M <b>DF</b> <b>GL</b> 55.5 M <hr/> <b>DATE</b> <u>09-NOV-2009</u>

**UID:**  
 N/A  
**LICENSE:**  
 ADW 2009-116-03-